



ROUGH TERRAIN CRANE

XCR130_U

SUPERIOR LIFTING EQUIPMENT



117 t
(129 USt)



50 m
(164 ft)



56 m
(183.7 ft)



64.8 m
(212.5 ft)





COMPANY PROFILE

XCMG's Hoisting machinery division is the leader in China's lifting industry focusing on the research, development and the production of mobile cranes. At XCMG's core is a commitment to technological innovation while utilizing the latest digital technologies to push the boundaries of product development and production while following our principles of social responsibility, building a sustainable and better future, and to create value for our customers.



PRODUCT RANGE

XCMG's Hoisting machinery division boasts a complete product range. Our cranes are sold and serviced in more than 190 countries and regions worldwide.



MOBILE CRANES

↗ 5 t-300 t Truck Crane

↗ 40 t-4000 t All Terrain Crane

↗ 13 t-150 t Rough Terrain Crane

CRAWLER CRANES

↗ 45 t-4000 t Lattice Crawler Crane

↗ 30 t-220 t Telescopic Crawler Crane



XCMG's Rough Terrain cranes offer superior a performing crane with intelligent and energy-saving features.

Second to none operations environment

At 1.1 m (3.6 ft) wide, the RT cab offers the room to be comfortable all day long as you operate the crane. Add to that the panoramic visibility, powerful AC and heating systems, blue-tooth radio, multiple charging ports, and a fully adjustable premium seat, the XCMG RT crane will become your favorite workspace.

Precise control and efficient operation

Dual electronic joysticks, conveniently placed controls, large displays, and customizable electronic controlled hydraulic system that is tuned for precise control while maintaining the speed needed for challenging jobs, along with automatic steering angle adjustments and auto hook and boom height functions, the XCMG XCR130U offers unmatched control and operation efficiency.

Fast and flexible jobsite Mobility

True All-wheel drive with interaxle and differential locks along with 4 steering modes with a minimum turning radius of 8.4 m (27.6ft), power-shift transmission and specialized radial off-road tires, the XCMG RT crane will handle any worksite conditions you cane throw at it.

Leading the industry in saving energy

XCMG's RT cranes incorporate energy-efficient hydraulic systems, hydraulic torque converters with locking functions, and engine modes to reduce fuel consumption all help to reduce your fuel use and drive more profits to your bottom line.

Superior lifting performance in any environment

The 50 m (164 ft) 5-section boom is among the longest in the industry, add the ability to reach to 68.3 m (224 ft) after the jib is installed the crane has the flexibility for any job, from oilfields, mines, road and bridge construction, to broad industrial use.

Intelligent designs and focus on quality

XCMG's commitment to paying attention to the details that matter most to you like ease of access, maintenance points, jib erecting, CWT removal and robotic welding and machining make for a crane that will keep your operators and technicians happy for years to come.



CONTENTS

Product advantages and highlights	1-9
Dimensions	10
Technical specifications	11-12
Optional equipment/ Weights	13
Working speeds	14
Counterweight	15
Boom / Jib combinations	16
Load charts (metric)	17-23
Load charts (imperial)	24-29
Table of main technical parameters	30-31
Description of symbols	32-33



SUPERIOR OPERATOR ENVIRONMENT



BEST SEAT IN THE HOUSE

1.1 m (3.6 ft) WIDE EXTRA-LARGE WELL THOUGHT OUT CAB FOR ALL DAY COMFORT FOR ALL USERS.

Cab is well sealed against dust and noise. The generously sized seat and extra head, shoulder, and arm room means any size operator will feel right at home.

①	Large glass area	Large windshield and top glass to reduce blind spots for improved safety during lifting and driving. Includes top and front sunshades.	⑧	Engine Start/Stop	Separate engine Stop switch independent of the ignitions switch. Gives the ability to start and stop the engine and leave the LMI active.
②	Engine information	Always on relevant engine information including RPM, temperature, fuel level, and oil pressure.	⑨	Steering comfort	Steering column both telescopes and tilts.
③	HVAC	Adjustable air outlets on dash, behind the operator, at floor level and defroster vents for maximum comfort.	⑩	All day power	Stay powered with 12 and 24V power ports, as well as USB radio input and Bluetooth.
④	Emergency stop switch	Easy accessible from the seat and outside (with the door open) to stop engine if the need arises.	⑪	Stay Hydrated	Cupholders and storage bins abound
⑤	Operation display	The 264mm (10.4 in) true color touch screen with adjustable angle provides friendly screens and operation and diagnostic information at a glance.	⑫	Seat	Seat includes adjustable cushion height, back rest angle, headrest, fore-aft, and armrests.
⑥	Camera display	Split screen display to monitor the winches and behind when reversing, as well as boom tip cameras.	⑬	Outrigger controls	Select which beams or jacks you want to move and then just hit the extend or retract button. No contorting your hands trying to press multiple buttons.
⑦	Control lever	Joysticks include winch rotation tactile feedback as well as operator presents, horn, free swing and high speed winch mode buttons.	⑭	Adjustable joystick pods	The joystick pods are independently adjustable from the seat for maximum comfort.

FAST, RUGGED AND FLEXIBLE

- With four steering modes, including crab steering, tight-turning radius, front axle and rear axle independent steering, that are all controlled by the steering wheel, makes for a natural feeling very flexible crane.
- The crane has 6 forward and 3 reverse gears and a minimum turning radius is 8.4 m (27.6 ft), it can easily get in and out of tight spaces as well as cover long distances with ease.



STRONG POWER

- 231 kW (310 bhp) Tier 4f low-speed high-torque engine combined with a powershift transmission with hydraulic torque converters, true all-wheel drive and deeply lugged radial tires will get you through the toughest conditions.



SUPERIOR PERFORMANCE FOR EXCELLENT LIFTING EQUIPMENT

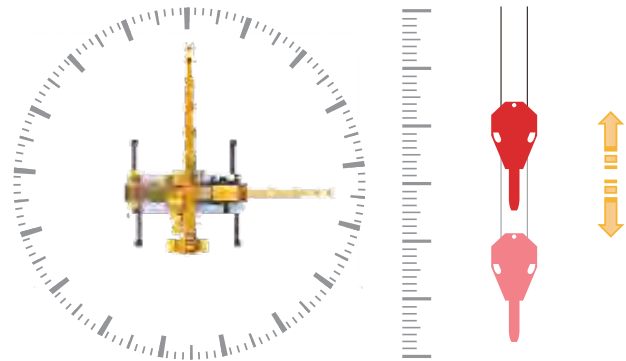
SUPERIOR LIFTING CAPACITY

- The 50 m (164 ft) 5-section boom is among the longest in the industry, and when the full 18.3 m (60 ft) jib is erected, the tip can reach up to 68.3 m (224 ft) and with a working radius out to 56m(183.7ft), the crane is suitable for any kind of lifting work you can throw at it.
- The boom extension system features independent telescoping of T2 and synchronous telescoping of sections 3-5.



DUAL VARIABLE PUMP CONTROL SYSTEM

- Dedicated dual-variable displacement pumps for totally independent winch and boom control, or the flow can be combined for high-speed operation.
- Additional pump for outriggers and slewing and independent pump for AC system.
- Hydraulic oil cooler with automatic temperature control for sustainable operation in high or low temperature environments.



FINE CONTROL

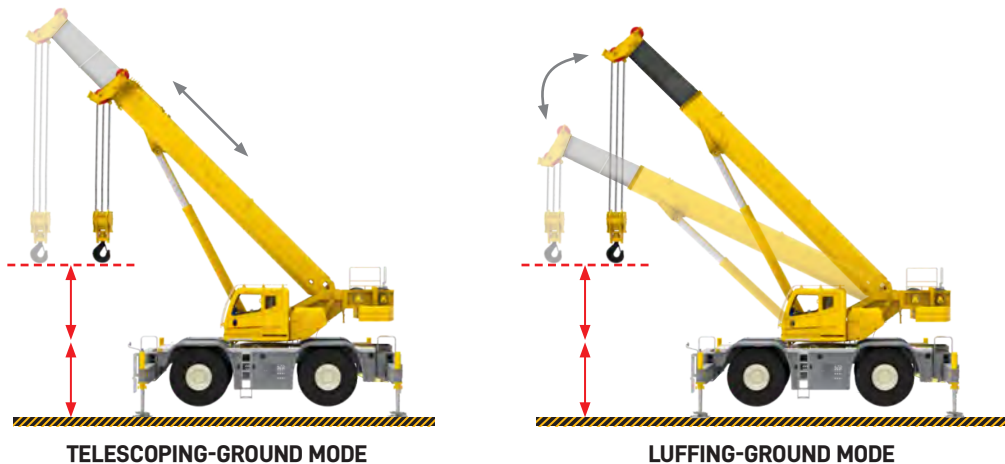
Millimeter precision is achieved when winching, slewing and luffing.



AUTO WINCH AND BOOM COMPENSATION CONTROL SYSTEM

Hook height compensation

The control system automatically controls the spooling in and out of winch rope during telescoping and luffing operations, reducing operation time and difficulty while ensuring safe and efficient operations.



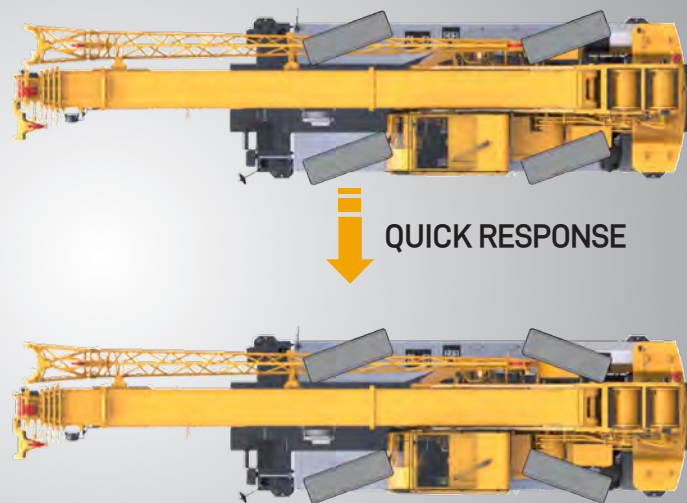
SUPERIOR PERFORMANCE MAKES FOR PRECISE CONTROL AND EFFICIENT OPERATION

INNOVATIVE AUTOMATIC STEERING ANGLE ADJUSTMENT TECHNOLOGY

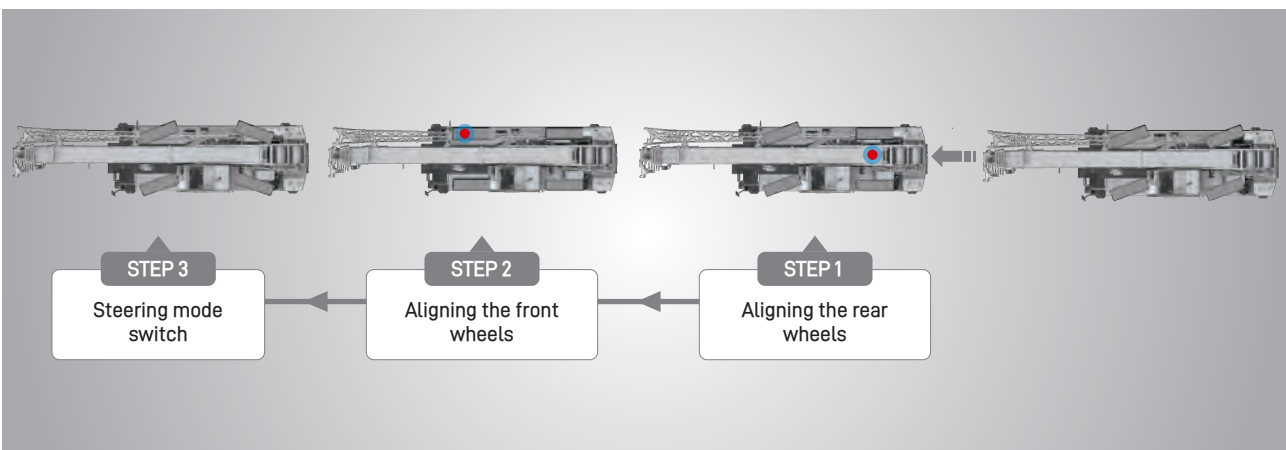
- The steering modes can be switched at any time with the turn of the knob and the crane takes care of the rest.
- Dedicated display mode showing the exact position of the wheels and the status of the system. No more guessing where the wheels are at.

STEERING MODE SWITCHING IN XCMG ROUGH TERRAIN CRANES EASY SELECTION FOR EFFICIENT AND TIME-SAVING OPERATION

XCMG MULTI-MODE STEERING TECHNOLOGY WITH REAR WHEEL AUTO CENTERING



STEERING MODE SWITCHING IN OTHER ROUGH TERRAIN BRANDS



ADVANCED ENERGY-SAVING HYDRAULIC SYSTEM

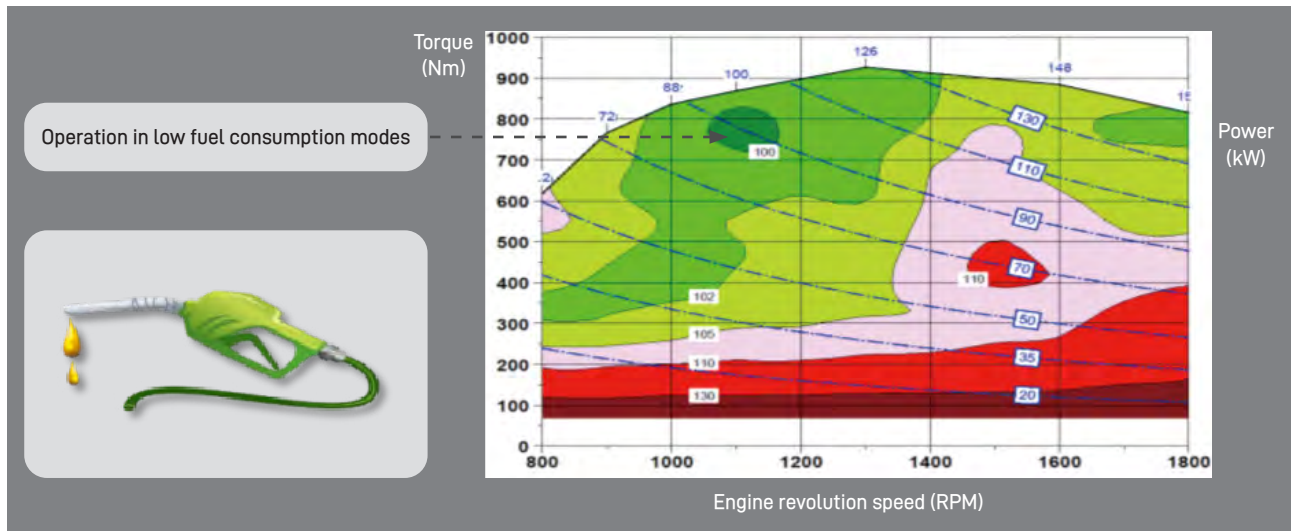
- Latest technology energy-saving hydraulic system with electronic controlled dual-variable pumps. By using gravity assistance for luffing down, fuel use can be greatly reduced under various operation modes.



SUPERIOR PERFORMANCE LEADING THE INDUSTRY IN SAVING ENERGY

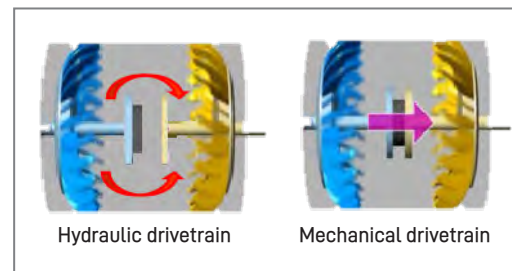
ECO ENERGY-SAVING MODE

- Under different operation modes, limiting the engine speed and utilizing the high-flow pumps, XCMG RT cranes achieve the lowest fuel consumption during lifting operations.



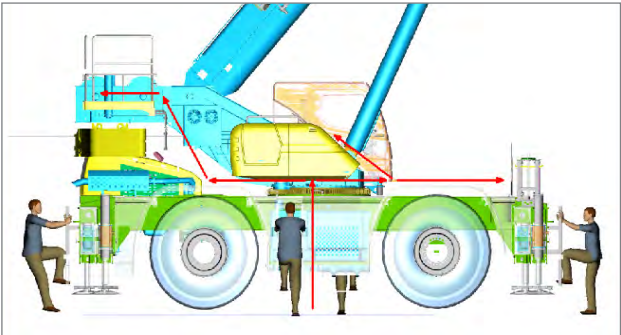
EFFICIENT HYDRAULIC TORQUE CONVERTER DRIVETRAIN

- The lock up torque converter offers efficient high speed travel operation and low speed torque multiplication when the going gets tough.
- At creep speeds the hydraulic torque multiplication is utilized to pull the crane through the toughest conditions.
- During higher speed travel, the converter is bypassed for a highly efficient direct drive connection between the engine and transmission.

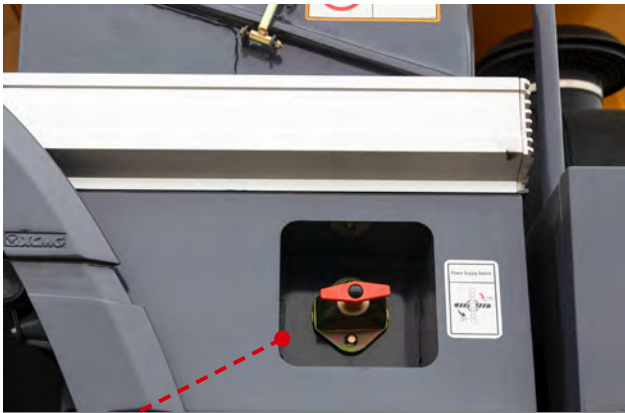


WELL-PLANNED ACCESS

- With complete cab and deck, and maintenance access, the operator can get on the vehicle from all four sides no matter the upper rotation.
- Professional ergonomic simulation analysis, and user-friendly detailed design.



The pressure testing ports are centrally arranged.

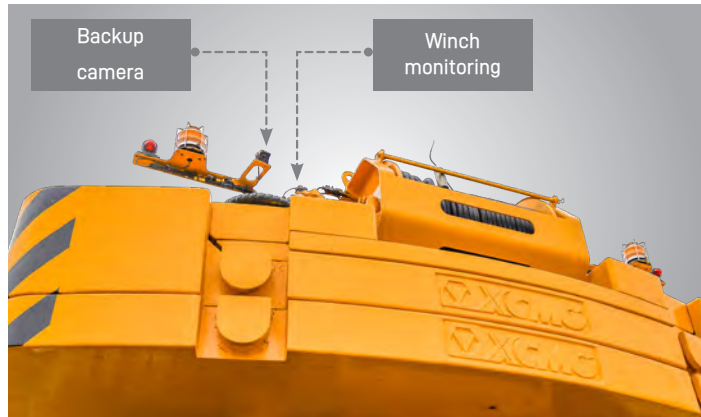


Main power switch

SUPERIOR CRAFTSMANSHIP AND UPGRADED QUALITY

MULTI-DIRECTIONAL MONITORING FOR SAFER DRIVING AND LIFTING OPERATIONS

- Equipped with winch monitoring camera so the operator can always see what is going on with the winches.
- Backup camera automatically activates when traveling in reverse.
- Optional zoomable boom tip camera to give better view into the lifted load.



THREE-DIMENSIONAL AIR VENTS FOR COMFORTABLE DRIVING

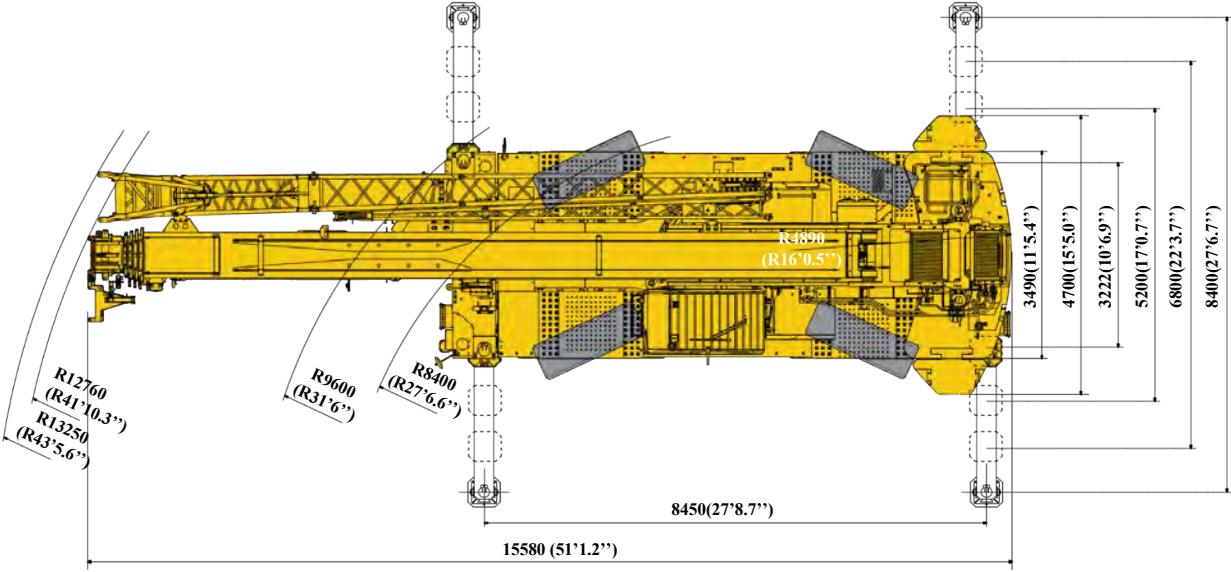
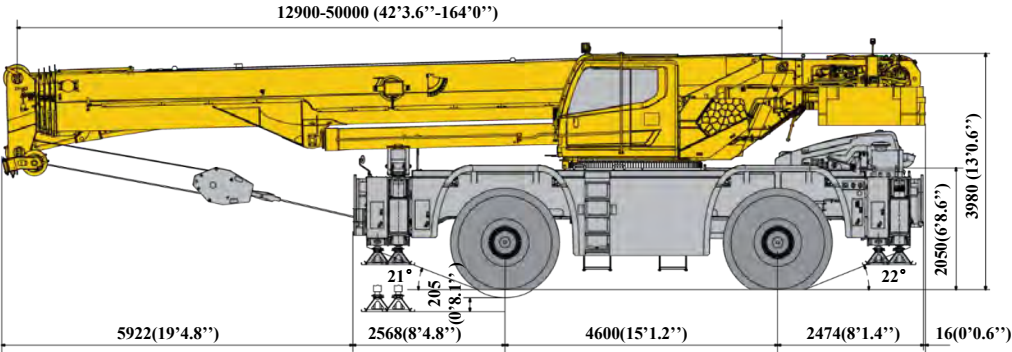
- High power air conditioner is equipped with three-dimensional air vents for more uniform and directable air flow.
- Also includes vents at the operator's feet and on the dash as well as defrost vents directed at the windshield.
- Diesel fuel fired heater for near instant heat.



SUPERIOR ELECTRICAL PROTECTION FOR MORE RELIABLE OPERATION

- The electrical features all sealed connectors.
- Centralized electrical panels with all controllers, fuses and relays.
- Intelligent wire routings and clamps to maximize crane uptime.





TECHNICAL SPECIFICATIONS



CONFIGURATION

Frame	Made of high strength fine grained steel, welded torsion-resistant frame type construction with large cross-section and high load-bearing capacity.
Outriggers	4 outriggers are arranged in H shape, located at both sides of frame, are electro-hydraulically controlled from the cab with electronic level. Outrigger float dimensions: 550× 550 mm (1.8×1.8 ft).
Engine	Cummins L9, in line six-cylinder water-cooled diesel engine U.S. EPA Tier 4F emission standard. Power: 231 kW (310 bhp) @ 2100 rpm Torque: 1526 Nm (1126 ft-lb) @ 1400 rpm, compliant to U.S. Fuel tank capacity: 305 L (81 gal); DEF tank capacity: 30 L (8 gal).
Transmission	ZF 6WG260 automated power shift transmission with 6 forward and 3 reverse speeds. Drop box style with emergency steering pump and interaxle lock up.
Axles	Heavy duty drive/steering axles with disk brakes and deferential locks.
Suspension	Front axle: rigidly mounted to the frame. The rear axle is mounted with a center pivot that locks solid during pick and carry operation.
Tires	875/65R29 tires designed for rough terrain cranes.
Brake	Service brake: double-circuit hydraulic disc brakes acting on all wheels. Automatically braking and alarm when the pressure in braking system is too low. Parking brake: spring-loaded brake, acting on front and rear axles.
Steering	Four mode hydraulic steering: Front and rear independent, tight and crab steer modes. Rear axle will automatically center when changing modes.
Hydraulic system	Dual-variable displacement pumps, used for lifting, luffing and telescoping operations, and a gear pump, used for slewing, outrigger, steering and braking operations; a load sharing proportional multi-way selection valve is used as the main valve. Includes hydraulic oil cooler. Independent hydraulic oil cooler is fitted. Hydraulic oil tank capacity: 1225 L (323.6 gal).
Electrical system	24 V DC, two 180 AH 12 V batteries in series. LMI and crane control via CAN bus system. With headlights, break lights, turn signals, back up lights, work lights on turntable, boom and cab.

**CONFIGURATION**

Boom	<p>The boom consists of one basic section and four telescopic sections with U-type cross-section, and is extended and retracted by the dual-cylinder wire-rope-type telescoping system. 6 sheaves on boom head are standard.</p> <p>Boom length: 12.9~50 m (42.3~164.0 ft).</p>
Jib	<p>2-section, lattice structure, with 0°, 15° and 30° jib offset angles available, stowed at the side of the boom.</p> <p>Jib length: 10.8~18.3 m (35.4~60.0 ft).</p>
Control system	Electrically controlled operation system is equipped with two dual axes levers controlling the movements of the crane.
Main winch	The grooved drum is driven by a hydraulic motor with counterbalance valve through a planetary gear reducer, and a normally closed brake.
Slewing system	Single-row four-point ball contact slewing ring, driven by a hydraulic motor through a planetary gear reducer with spring applied hydraulic release brake and includes free swing mode.
Cab	Operator's cab is tilt-able to 20deg with sliding door, large safety glass windows and roof guardrail. Includes top and front sliding sunscreens and multi-way adjustable seat and arm rests. Heater, air conditioner, radio, and 12 V and 24 V DC outlets are included.
Optional aids	Hydraulic counterbalance valves, hydraulic relief valves. Fully featured LMI system including Anti-two block and winch overwind.
Counterweight	Standard self removing: 16 tonne (35,274 lb),
Hook block	60 t (66 USt) hook block, 7 t (7.7 USt) hook block.
Luffing system	Single cylinder luffing, with counterbalance valve featuring the load compensation function.
Auxiliary sheave	Auxiliary sheave stowable on boom tip for single part of line.
360° Slewing locking device	House lock that engages the teeth of the slew gear for locking the upper in any position

Product parts list is as mentioned above. Please refer to the product quotation for specific parts.

OPTIONAL EQUIPMENT/WEIGHT



OPTIONAL EQUIPMENT	COMPONENT DESCRIPTION
Hook block	110 tonne (121 USt) hook block
Counterweight	Total weight :7 tonne (15,432 lb), consisting of 2.9 tonne (6,393 lb)×2 and 1.2 tonne (2,646 lb).
Auxiliary winch	The system is driven by a hydraulic motor through a planetary gear reducer, with a normally closed brake and a counterbalance valve equipped.



CONFIGURATION	WEIGHTS	FRONT AXLE	REAR AXLE
Basic configuration weight	50523kg (111,384.2lb)	37,342.5 kg (82,326.2 lb)	13180.5 kg (29,058 lb)
Add: 16 tonne (35,274 lb) counterweight	16,000 kg (35,274 lb)	-5,578.1 kg (-12,297.6 lb)	21,578.1 kg (47,571.6 lb)
Add: 7 tonne (15,432 lb) counterweight	7,000 kg (15,432.4 lb)	-2,407.9 kg (-5,308.5 lb)	9,408.9 kg (20,743.1 lb)
Add: Auxiliary winch system (with wire rope)	1218 kg (2,685.2 lb)	-542.7 kg (-1,196.4 lb)	1,760.7 kg (3,881.7 lb)
Add: Jib	1,480 kg (3,262.8 lb)	2,438.1 kg (5,375.2 lb)	-958.1 kg (-2,112.3 lb)
Add: Auxiliary sheave	71 kg (156.5 lb)	198 kg (436.4 lb)	-126.9 kg (-279.7 lb)
Add: 110 tonne (120 USt) hook block (Fixed in front of the crane)	1,018 kg (2,244.3 lb)	1,982.9 kg (4,371.5 lb)	-964.9 kg (-2,127.2 lb)
Add: 60 tonne (66 USt) hook block (Fixed in front of the crane)	500 kg (1,102.3 lb)	973.9 kg (2,147.1 lb)	-473.9 kg (-1,044.8 lb)
Add: 7 tonne (7.7 USt) hook block (Fixed in front of the crane)	257 kg (566.6 lb)	334.6 kg (737.7 lb)	-77.6 kg (-171.1 lb)





Note: if the counterweight of 23 tonne (50,706 lb) is taken on the crane, only short-distance transfer is allowed, and travel speed should not exceed 5 km/h (3.1 mph).




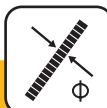








HOOK BLOCK	SHEAVE NUMBER (PCS)	PARTS OF LINE	WEIGHT OF HOOK BLOCK	DIMENSIONS	NOTES
110 tonne (121 USt)	6	13	1018 kg (2,245 lb)	640 × 580 × 1749 mm (2.1 × 1.9 × 5.74 ft)	Dual-hook
60 tonne (66 USt)	3	6	500 kg (1,102 lb)	450 × 590 × 1494 mm (1.48 × 1.94 × 4.9 ft)	Single-hook
7 tonne (7.7 USt)	1	1	257 kg (566 lb)	731 × Ø426 mm (2.4 × Ø1.4 ft)	Single-hook

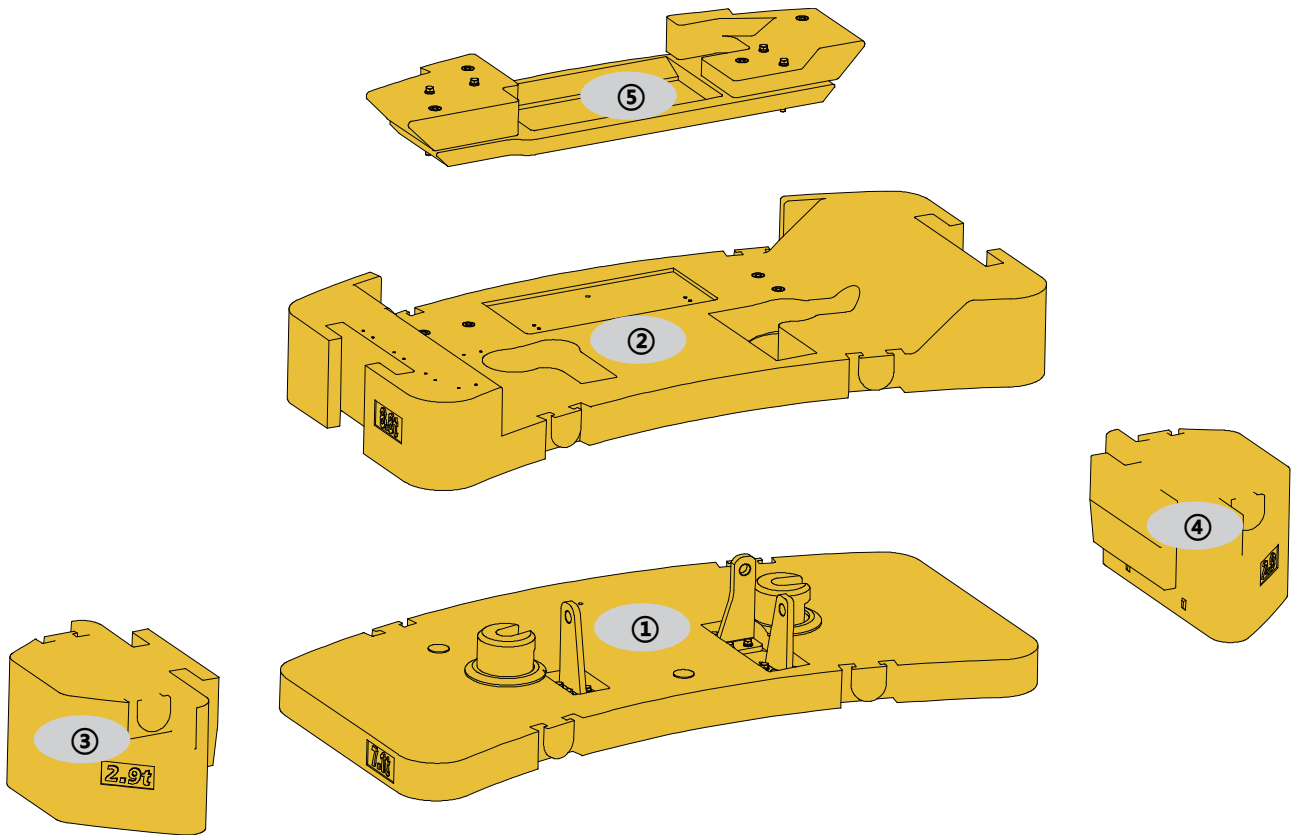
ROUGH TERRAIN CRANE **XCR130_U**

SUPERIOR LIFTING EQUIPMENT

			
875 / 65R29		30 kph (18.6 mph)	80%

				
	0-135 m / min (0-442.8 fpm), single line, no load	99 kN (22,256 lbf)	22 mm (0.866 in)	250 m (820 ft)
	0-90 m / min (0-295.2 fpm), single line, no load	71 kN (15,961 lbf)	22 mm (0.866 in)	150 m (492 ft)
	0-1.8 rpm			
	Approx. 55 s for boom luffing up from 0° to 80°			
	Approx. 125 s for boom extending from 12.9 m to 50 m (43.2 ft- 164.0 ft)			

COUNTERWEIGHT



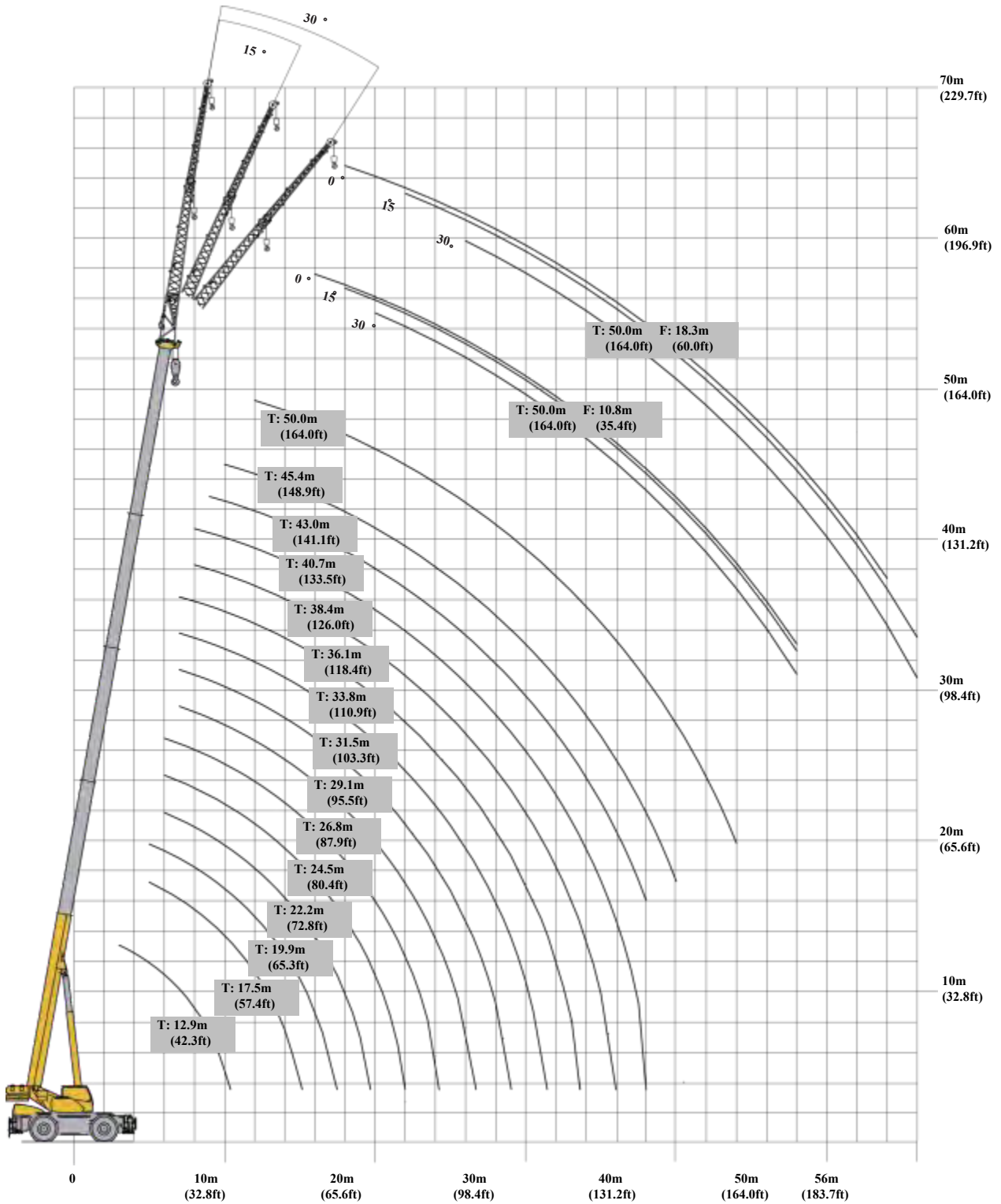
	①	②	③	④	⑤
Dimensions (L×W×H) mm (ft)	3480×1850 ×570 (11.4×6.3×1.9)	3480×1850×455 (11.4×6.3×1.5)	1241×787×655 (4.1×2.6×2.1)	1241×787×655 (4.1×2.6×2.1)	2475×720×256 (8.1×2.4×0.8)
Weights t (lb)	7.2 (15,874)	8.8 (19,400)	2.9 (6393)	2.9 (6393)	1.2 (2646)

OPERATION MODE	23 T (50,706 LB)	16 T (35,274 LB)	0 T (0 LB)
Combinations	① + ② + ③ + ④ + ⑤	① + ②	—

BOOM	BOOM+ 1ST FIXED JIB	BOOM+ 2ND FIXED JIB
T: 12.9-50 m (42.3-164 ft)	T: 50 m (164 ft) F: 10.8 m (35.4 ft)	T: 50 m (164 ft) F: 18.3 m (60 ft)

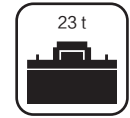
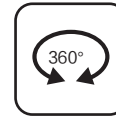


WORKING RANGE DIAGRAM



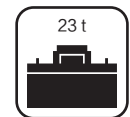
BOOM

ASME B30.5 85%



	12.9	17.5	19.9	22.2	24.5	26.8	29.1	31.5	33.8	36.1	38.4	40.7	43.0	45.4	50.0	
2.5	117*															2.5
3	110.0															3
4	90.0															4
5	72.0	70.0	39.2													5
6	60.0	59.5	40.3	56.0	37.5	39.2										6
7	52.0	52.0	41.3	52.0	38.6	40.0	37.0	30.1	28.0	31.0						7
8	45.5	45.5	42.3	45.0	39.1	37.5	37.0	30.5	26.3	30.5	22.5	20.6				8
9	39.0	40.3	40.0	39.6	40.1	35.2	35.0	28.0	24.7	27.5	21.6	19.8	19.5			9
10	28.5	35.1	34.8	34.5	35.5	33.1	31.0	26.5	23.4	27.6	20.4	18.7	18.9	17.4		10
12		25.3	27.5	25.6	28.3	28.7	27.0	22.4	21.2	24.4	18.5	17.2	17.3	17.0	13.9	12
14		19.1	21.2	19.0	21.2	22.1	20.2	21.3	19.2	21.1	16.6	15.2	15.7	15.9	13.4	14
16			16.5	14.5	16.6	17.5	15.6	17.1	17.5	16.5	15.5	13.5	14.0	14.1	12.4	16
18				11.3	13.3	14.4	12.4	13.8	15.0	13.3	14.4	12.2	12.6	12.7	12.0	18
20					10.8	12.1	10.0	11.4	12.5	10.9	11.9	11.1	11.4	11.5	10.8	20
22					6.9	10.4	8.2	9.5	10.6	9.0	10.0	10.0	9.5	10.3	9.5	22
24						6.8	6.7	8.0	9.0	7.5	8.5	9.3	8.0	8.8	8.4	24
26							4.2	6.7	7.8	6.2	7.2	8.2	6.8	7.5	7.1	26
28								4.5	6.7	5.2	6.2	7.1	5.7	6.5	6.1	28
30									3.3	4.4	5.3	6.2	4.9	5.6	5.2	30
32										2.1	4.6	5.5	4.1	4.9	4.5	32
34											3.9	4.8	3.5	4.2	3.8	34
36												4.2	2.9	3.7	3.2	36
38												2.1	2.4	3.2	2.7	38
40														2.7	2.3	40
42															1.9	42
44															1.6	44

*Requires special equipment

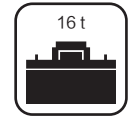
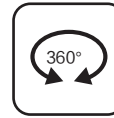


	12.9	17.5	19.9	22.2	24.5	26.8	29.1	31.5	33.8	36.1	38.4	40.7
	0°	0°	0°	0°	0°	0°	0°	0°	0°	0°	0°	0°
	10.4	15.1	17.4	19.7	22.0	24.3	26.6	29.0	31.3	33.6	36.0	38.0
	17.5	12.1	11.2	6.7	6.9	6.2	3.5	4.2	2.2	1.5	1.2	2.1

LOAD CHARTS

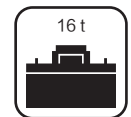
BOOM

ASME B30.5 85%



	12.9	17.5	19.9	22.2	24.5	26.8	29.1	31.5	33.8	36.1	38.4	40.7	43.0	45.4	50.0	
2.5	117*															2.5
3	110.0															3
4	85.0															4
5	70.0	70.0	39.2													5
6	58.5	58.5	40.3	55.0	37.5	39.2										6
7	49.0	49.0	41.3	47.5	38.6	40.0	37.0	30.1	28.0	31.0						7
8	42.5	42.2	42.1	40.3	39.1	37.5	37.0	30.5	26.3	30.5	22.5	20.6				8
9	37.0	35.7	37.1	34.1	36.5	35.2	35.0	28.0	24.7	27.5	21.6	19.8	19.5			9
10	25.0	29.9	33.0	29.4	32.0	33.1	31.0	26.5	23.4	27.6	20.4	18.7	18.9	17.4		10
12		20.3	23.1	19.9	22.2	24.1	21.6	22.4	21.2	22.7	18.5	17.2	17.3	17.0	13.9	12
14		14.7	17.2	14.3	16.5	18.1	15.9	17.4	18.7	16.8	16.6	15.2	15.7	15.9	13.4	14
16			13.4	10.7	12.6	14.2	12.1	13.5	14.7	13.0	14.1	13.5	13.6	14.1	12.4	16
18				8.0	9.9	11.5	9.4	10.8	11.9	10.3	11.3	12.2	10.8	11.7	11.2	18
20					7.9	9.4	7.4	8.7	9.8	8.2	9.2	10.2	8.8	9.6	9.1	20
22					5.0	7.8	5.9	7.2	8.2	6.6	7.6	8.6	7.2	8.0	7.5	22
24						4.8	4.6	5.9	6.9	5.4	6.4	7.3	5.9	6.7	6.3	24
26							2.5	4.9	5.9	4.4	5.3	6.2	4.9	5.6	5.2	26
28								3.1	5.0	3.5	4.5	5.4	4.0	4.8	4.3	28
30									2.9	2.7	3.7	4.6	3.3	4.0	3.6	30
32											3.1	4.0	2.7	3.4	3.0	32
34											2.5	3.4	1.9	2.9	2.4	34
36												3.0	1.4	2.4	1.9	36
38														1.9	1.4	38
40															1.0	40

*Requires special equipment



	12.9	17.5	19.9	22.2	24.5	26.8	29.1	31.5	33.8
	0°	0°	0°	0°	0°	0°	0°	0°	0°
	10.4	15.1	17.4	19.7	22.0	24.3	26.6	29.0	31.3
	15.5	9.9	9.3	4.3	5.0	4.5	2.2	2.9	1.6

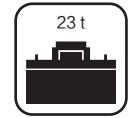
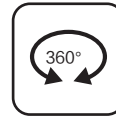
JIB
ASME B30.5 85%



	50+10.8			
	0°	15°	30°	
16	6.2			16
18	6.1	5.3		18
20	6.0	5.1	3.5	20
22	6.0	5.1	3.3	22
24	5.4	4.9	3.2	24
26	4.6	4.6	3.1	26
28	4.0	4.2	3.0	28
30	3.4	3.6	2.9	30
32	3.0	3.2	2.7	32
34	2.5	2.7	2.6	34
36	2.2	2.3	2.5	36
38	1.9	2.0	2.2	38
40	1.6	1.7	1.8	40
42	1.4	1.4	1.5	42
44	1.1	1.3	1.3	44
46	0.9	1.0	1.1	46
48	0.7	0.8	0.9	48

LOAD CHARTS

JIB
ASME B30.5 85%



	50+18.3			
	0°	15°	30°	
18	3.0			18
20	3.1			20
22	3.1	2.4		22
24	3.1	2.2		24
26	3.1	2.1	1.6	26
28	2.9	2.0	1.5	28
30	2.8	1.9	1.4	30
32	2.7	1.8	1.3	32
34	2.6	1.7	1.2	34
36	2.4	1.6	1.2	36
38	2.2	1.5	1.1	38
40	1.8	1.4	1.1	40
42	1.6	1.4	1.0	42
44	1.4	1.3	1.1	44
46	1.2	1.2	1.0	46
48	1.0	1.2	1.0	48
50	0.8	1.0	1.0	50
52	0.6	0.8	0.9	52
54		0.7	0.8	54
56		0.5	0.6	56

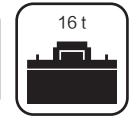
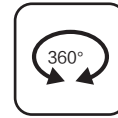
JIB
ASME B30.5 85%



	50+10.8			
	0°	15°	30°	
16	6.2			16
18	6.1	5.3		18
20	5.9	5.1	3.5	20
22	5.0	5.1	3.3	22
24	4.1	4.5	3.2	24
26	3.5	3.8	3.1	26
28	2.9	3.2	3.0	28
30	2.4	2.7	2.9	30
32	2.1	2.3	2.4	32
34	1.7	1.9	2.1	34
36	1.4	1.5	1.7	36
38	1.2	1.3	1.4	38
40	0.9	1.0	1.2	40
42	0.7	0.8	0.9	42
44			0.7	44

LOAD CHARTS

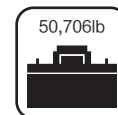
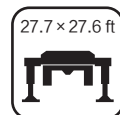
JIB
ASME B30.5 85%



	50+18.3			
	0°	15°	30°	
18	3.0			18
20	3.1			20
22	3.1	2.4		22
24	3.1	2.2		24
26	3.1	2.1	1.6	26
28	2.9	2.0	1.5	28
30	2.7	1.9	1.4	30
32	2.3	1.8	1.3	32
34	2.0	1.7	1.2	34
36	1.6	1.6	1.2	36
38	1.4	1.5	1.1	38
40	1.2	1.4	1.1	40
42	0.9	1.2	1.0	42
44	0.7	1.0	1.1	44
46		0.7	0.9	46
48			0.7	48

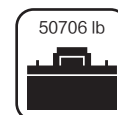
BOOM

ASME B30.5 85%



	42.3	57.4	65.3	72.8	80.4	87.9	95.5	103.3	110.9	118.4	126.0	133.5	141.1	148.9	164.0	
8.2	257938*															8.2
9.8	242506															9.8
13.1	198414															13.1
16.4	158731	154322	86420													16.4
19.7	132276	131174	88845	123458	82673	86420										19.7
23.0	114639	114639	91050	114639	85098	88184	81570	66358	61729	68343						23.0
26.2	100309	100309	93255	99207	86200	82673	81570	67240	57981	67240	49604	45415				26.2
29.5	85979	88845	88184	87302	88404	77602	77161	61729	54454	60627	47619	43651	42990			29.5
32.8	62831	77381	76720	76059	78263	72972	68343	58422	51588	60847	44974	41226	41667	38360		32.8
39.4		55776	60627	56438	62390	63272	59524	49383	46738	53792	40785	37919	38140	37478	30644	39.4
45.9		42108	46738	41887	46738	48722	44533	46958	42328	46517	36596	33510	34612	35053	29542	45.9
52.5			36376	31967	36596	38581	34392	37699	38581	36376	34171	29762	30864	31085	27337	52.5
59.1				24912	29321	31746	27337	30423	33069	29321	31746	26896	27778	27998	26455	59.1
65.6					23810	26676	22046	25132	27558	24030	26235	24471	25132	25353	23810	65.6
72.2					15212	22928	18078	20944	23369	19841	22046	22046	20944	22707	20944	72.2
78.7						14991	14771	17637	19841	16535	18739	20503	17637	19400	18519	78.7
85.3							9259	14771	17196	13669	15873	18078	14991	16535	15653	85.3
91.9								9921	14771	11464	13669	15653	12566	14330	13448	91.9
98.4									7275	9700	11684	13669	10803	12346	11464	98.4
105.0										4630	10141	12125	9039	10803	9921	105.0
111.5											8598	10582	7716	9259	8377	111.5
118.1												9259	6393	8157	7055	118.1
124.7												4630	5291	7055	5952	124.7
131.2														5952	5071	131.2
137.8															4189	137.8
144.4															3527	144.4

*Requires special equipment

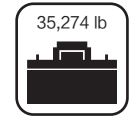
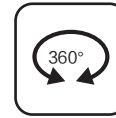
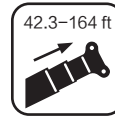


	42.3	57.4	65.3	72.8	80.4	87.9	95.5	103.3	110.9	118.4	126.0	133.5
	0°	0°	0°	0°	0°	0°	0°	0°	0°	0°	0°	0°
	34.1	49.5	57.1	64.6	72.3	79.8	87.4	95.2	102.8	110.3	118.1	124.7
	38581	26676	24692	14771	15212	13669	7716	9259	4850	3307	2646	4630

LOAD CHARTS

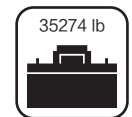
BOOM

ASME B30.5 85%



	42.3	57.4	65.3	72.8	80.4	87.9	95.5	103.3	110.9	118.4	126.0	133.5	141.1	148.9	164.0	
8.2	257938*															8.2
9.8	242506															9.8
13.1	187391															13.1
16.4	154322	154322	86420													16.4
19.7	128969	128969	88845	121253	82673	86420										19.7
23.0	108025	108025	91050	104719	85098	88184	81570	66358	61729	68343						23.0
26.2	93696	93034	92814	88845	86200	82673	81570	67240	57981	67240	49604	45415				26.2
29.5	81570	78704	81791	75177	80468	77602	77161	61729	54454	60627	47619	43651	42990			29.5
32.8	55115	65918	72752	64815	70547	72972	68343	58422	51588	60847	44974	41226	41667	38360		32.8
39.4		44753	50926	43872	48942	53131	47619	49383	46738	50044	40785	37919	38140	37478	30644	39.4
45.9		32408	37919	31526	36376	39903	35053	38360	41226	37037	36596	33510	34612	35053	29542	45.9
52.5			29542	23589	27778	31305	26676	29762	32408	28660	31085	29762	29983	31085	27337	52.5
59.1				17637	21826	25353	20723	23810	26235	22707	24912	26896	23810	25794	24692	59.1
65.6					17416	20723	16314	19180	21605	18078	20282	22487	19400	21164	20062	65.6
72.2					11023	17196	13007	15873	18078	14550	16755	18960	15873	17637	16535	72.2
78.7						10582	10141	13007	15212	11905	14109	16094	13007	14771	13889	78.7
85.3							5512	10803	13007	9700	11684	13669	10803	12346	11464	85.3
91.9								6834	11023	7716	9921	11905	8818	10582	9480	91.9
98.4									6393	5952	8157	10141	7275	8818	7937	98.4
105.0											6834	8818	5952	7496	6614	105.0
111.5											5512	7496	4189	6393	5291	111.5
118.1												6614	3086	5291	4189	118.1
124.7														4189	3086	124.7
131.2															2205	131.2

*Requires special equipment



	42.3	57.4	65.3	72.8	80.4	87.9	95.5	103.3	110.9
	0°	0°	0°	0°	0°	0°	0°	0°	0°
	34.1	49.5	57.1	64.6	72.3	79.8	87.4	95.2	102.8
	34171	21826	20503	9480	11023	9921	4850	6393	3527

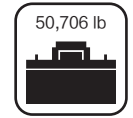
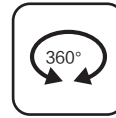
JIB
ASME B30.5 85%



	164.0+35.4			
	0°	15°	30°	
52.5	13669			52.5
59.1	13448	11684		59.1
65.6	13228	11244	7716	65.6
72.2	13228	11244	7275	72.2
78.7	11905	10803	7055	78.7
85.3	10141	10141	6834	85.3
91.9	8818	9259	6614	91.9
98.4	7496	7937	6393	98.4
105.0	6614	7055	5952	105.0
111.5	5512	5952	5732	111.5
118.1	4850	5071	5512	118.1
124.7	4189	4409	4850	124.7
131.2	3527	3748	3968	131.2
137.8	3086	3086	3307	137.8
144.4	2425	2866	2866	144.4
150.9	1984	2205	2425	150.9
157.5	1543	1764	1984	157.5

LOAD CHARTS

JIB
ASME B30.5 85%



	164.0+60.0			
	0°	15°	30°	
59.1	6614			59.1
65.6	6834			65.6
72.2	6834	5291		72.2
78.7	6834	4850		78.7
85.3	6834	4630	3527	85.3
91.9	6393	4409	3307	91.9
98.4	6173	4189	3086	98.4
105.0	5952	3968	2866	105.0
111.5	5732	3748	2646	111.5
118.1	5291	3527	2646	118.1
124.7	4850	3307	2425	124.7
131.2	3968	3086	2425	131.2
137.8	3527	3086	2205	137.8
144.4	3086	2866	2425	144.4
150.9	2646	2646	2205	150.9
157.5	2205	2646	2205	157.5
164.0	1764	2205	2205	164.0
170.6	1323	1764	1984	170.6
177.2	1102	1543	1764	177.2
183.7		1102	1323	183.7

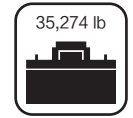
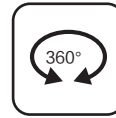
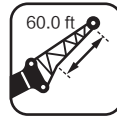
JIB
ASME B30.5 85%



	164.0+35.4			
	0°	15°	30°	
52.5	13669			52.5
59.1	13448	11684		59.1
65.6	13007	11244	7716	65.6
72.2	11023	11244	7275	72.2
78.7	9039	9921	7055	78.7
85.3	7716	8378	6834	85.3
91.9	6393	7055	6614	91.9
98.4	5291	5952	6393	98.4
105.0	4630	5071	5291	105.0
111.5	3748	4189	4630	111.5
118.1	3086	3307	3748	118.1
124.7	2646	2866	3086	124.7
131.2	1984	2205	2646	131.2
137.8	1543	1764	1984	137.8
144.4			1543	144.4

LOAD CHARTS

JIB
ASME B30.5 85%






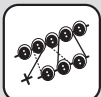





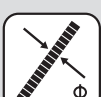







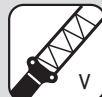






	164.0+60.0			
	0°	15°	30°	
59.1	6614			59.1
65.6	6834			65.6
72.2	6834	5291		72.2
78.7	6834	4850		78.7
85.3	6834	4630	3527	85.3
91.9	6393	4409	3307	91.9
98.4	5952	4189	3086	98.4
105.0	5071	3968	2866	105.0
111.5	4409	3748	2646	111.5
118.1	3527	3527	2646	118.1
124.7	3086	3307	2425	124.7
131.2	2646	3086	2425	131.2
137.8	1984	2646	2205	137.8
144.4	1543	2205	2425	144.4
150.9		1543	1984	150.9
157.5			1543	157.5

TYPE	ITEM	Unit	PARAMETERS			
Dimensions	Dimensions (L×W×H)	mm (ft)	15580×3490×3980 (51.1×11.4×13.1) CWT:16 t (35,274 lb)	15580×4700×3980 (51.1×15.4×13.1) CWT:23 t (50,706 lb)		
	Axle spacing	mm (ft)	4600(15.1)			
	Track (front / rear)	mm (ft)	2590(8.5) / 2590(8.5)			
	Front overhang / rear overhang	mm (ft)	2568(8.4)/2474(8.1)			
	Front extension / rear extension	mm (ft)	5922(19.4)/16(0.05)			
Weights	—		CWT:0 t (0 lb)	CWT:16 t (35,274 lb)	CWT:23 t (50,706 lb)	
	Axle load	Axle 1	kg (lb)	41,884 (92,338)	35,168 (77,532)	32,759 (72,220)
		Axle 2	kg (lb)	12,165 (26,819)	34,881 (76,899)	44,290 (97,643)
		Total	kg (lb)	54,049 (119,157)	70,049 (154,431)	77,049 (169,863)
Power	Engine model	—	Cummins L9, Teir 4f			
	Rated power	kW (bhp) / rpm	231(310) / 2100			
	Maximum output torque	N.m (ft-lb) / rpm	1526(1126) / 1400			
Travel	Maximum travel speed	km/h (mph)	≥30(18.6)			
	Minimum stable travel speed	km/h (mph)	1.8(1.2)			
	Minimum turning diameter	m (ft)	≤ 16.8(55.1)			
	Minimum turning diameter at boom tip	m (ft)	≤25.52(83.7)			
	Minimum ground clearance	mm (ft)	465(1.53)			
	Approach angle	°	21			
	Departure angle	°	22			
	Braking distance from 24kph (15mph)	m (ft)	≤9(29.5)			
Maximum gradeability	%	≥80				


MAIN TECHNICAL PARAMETERS

CATEGORY	ITEM		UNIT	PARAMETERS	
Main performance	Maximum rated load lifting capacity		t (USt)	117(129)	
	Minimum rated working radius		m (ft)	2.5(8.2)	
	Turning radius at turntable tail	At the counterweight	mm (ft)	4890(16.0)	
	Maximum load moment	Base boom section		kN.m (ft-lb)	3567 (2,632,700)
		Fully-extended boom		kN.m (ft-lb)	2117 (1,562,480)
		Fully-extended boom + jib		kN.m (ft-lb)	1294 (955,050)
	Outrigger span	Longitudinal		m (ft)	8.45(27.7)
		Lateral		m (ft)	8.4/6.8/5.2/3.2 (27.6/22.3/17.1/10.6)
	Lifting height	Base boom		m (ft)	13.3(43.6)
		Fully-extended boom		m (ft)	49.8(163.3)
		Fully-extended boom + jib		m (ft)	64.8(212.5)
	Boom length	Base boom		m (ft)	12.9(42.3)
		Fully-extended boom		m (ft)	50(164.0)
Fully-extended boom + jib		m (ft)	68.3(224.0)		
Jib offset angle			°	0, 15, 30	
Working speeds	Time for raising boom		s	≤55	
	Time for fully extending the boom		s	≤125	
	Maximum slewing speed		rpm	≥1.8	
	Time for extending/ retracting outriggers	Outrigger beams	Retracting	s	≤40
			Extending	s	≤40
		Outrigger jacks	Retracting	s	≤55
			Extending	s	≤45
	Lifting speed (single line, no load)	Main winch system		m/min (fpm)	≥135(442.8)
Auxiliary winch		m/min (fpm)	≥90(295.2)		

	Superstructure
	Rated lifting load
	Counterweight
	Slewing radius of variable-position counterweight
	Hook block
	Parts of line
	Boom length combination
	Wind speed
	Configuration
	Optional equipment
	Wire rope length
	Wire rope diameter

	Boom
	Boom length
	Working radius
	Lifting height with boom
	Boom angle
	Extension
	Independent jib head
	Simple jib head
	Fixed jib
	Fixed jib length
	Fixed jib offset angle
	Luffing jib

DESCRIPTION OF SYMBOLS

	Maximum single line pull		Maximum lifting height
	Maximum working speed		Maximum working radius
	Main winch		Super lift
	Auxiliary winch		Wind power jib
	Chassis		Telescoping
	Outrigger span		Slewing
	Tires		360° slewing
	Axle load		360° slewing with the 5th jack down
	Grade ability		Side and rear operation
	Travel speed		Operation over front
	Luffing		Crane on tires
	EN 13000 standard		

INTELLIGENT ENGINEERING AND MANUFACTURING LEADS TO QUALITY

- Starting with digital models, XCMG is leading the way with intelligent and quality manufacturing technologies. Integrating process simulation and the latest simulation technologies we have creating a high-end manufacturing platform that combines manufacturing and processes to supply the best cranes.



INTELLIGENT AND CONSISTANT ASSEMBLING



AUTOMATED PAINTING TO INSURE CONSISTANT QUALITY



DIGITIZED WELDING AND MACHINING



DIGITAL AUTOMATED PROCESS FLOWS



UNMANNED AUTOMATIC WELDING

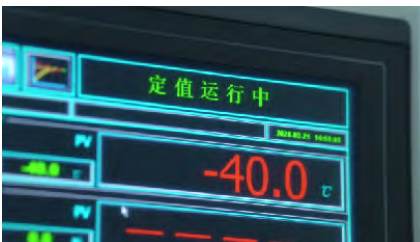
CONSISTANT SAFE AND RELIABLE MACHINES

G-SAFE LIFE CYCLE SAFE QUALITY

PARTS AND COMPLETE MACHINE TESTING

- Each new technology and component is required to meet the most stringent design and quality protocols.
- Each complete machine undergoes rigorous run in and testing, components are subject to ongoing testing.

OVER 2,000 COMPONENTS FROM 123 MANUFACTURES UNDERGOING LIFE CYCLE TESTING



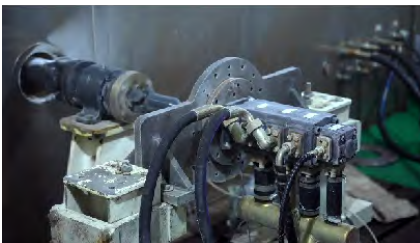
HMI display
Low-temperature performance test under -40 °C



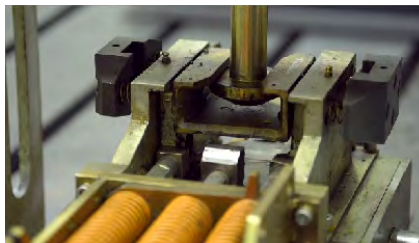
Length measurement sensor
48-hour rain test



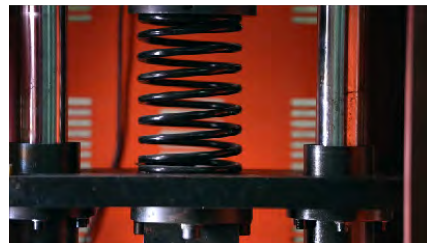
Panel buttons cycled
1.2 million times



Hydraulic pump undergoing Low-temperature
performance test under -40 °C



Telescoping mechanism
Smoothness test



Telescoping mechanism
Smoothness test

178 POST PRODUCTION FULL-SCALE TESTS ON THE COMPLETE MACHINE



Passability



Climbing & Hill holding



Dynamic & Static lifting

NOTES FOR LIFTING

- ❖ The total rated loads given in the rated load charts are the maximum lifting capacity when the crane is set up on firm and level ground with the tires free of the ground. The weights of the hookblock, rigging and the rope between the boom tip and block must be deducted as well as optional items such as the auxiliary sheave and jib.
- ❖ The working radius shown in the rated load charts is the radius when the load is lifted off the ground, and it is the actual value including loaded boom deflection. The operator will need to take boom deflection into consideration before beginning a lifting operation.
- ❖ A lifting operation is permissible only when the wind force is below grade 5 (instantaneous wind speed is 14m/s (46.2ft/s), and wind pressure is below 124Pa (2.59lb/ft²).
- ❖ Before beginning lifting operation, the operator should know the weight of the load to be lifted and the crane's working range, and then select proper working conditions. Never operate the crane beyond the limit shown in the chart. Use the lower value from the chart when the boom length or working radius is between the range of values.
- ❖ Observe the boom angle limit. Never operate the crane with the boom angle beyond the recommended limit even if a load is not being carried. Otherwise, the crane may overturn.
- ❖ The boom should be extended according to the telescoping codes shown on the load charts.



Address: 305A Equipment Ct NE
Lawrenceville, GA 30046
Email: letsgo@xcmgusa.com
Phone: 725-605-2777
Website: www.xcmg-usa.com

Do not copy without authorization!

This document is non-contractual. Constant improvement and engineering progress make it necessary that we reserve the right to make product model specification and configuration changes without notice. Illustrations shown may include optional equipment and accessories and may not include all standard equipment. Some parts need to be purchased separately. Conform to the local laws for license application and road traveling.



XCMG
North America