



XCT35_U

BOOM TRUCK



35US_t



120ft



149.8ft



CONTENTS

01	PRODUCT OVERVIEW	
	Product overview	01
	Lifting performance	03
02	TECHNICAL SPECIFICATIONS	
	Technical specifications	10
03	PARAMETERS & LIFTING	
	Basic performance parameters	14
	Dimensions	15
	Lifting capacities	18
04	ASSEMBLY	
	Use cases	21

↓ PART 01

Product overview





PRODUCT OVERVIEW

The XCMG XCT35_U is built to navigate tight job sites while delivering impressive lifting capacities at extended radii. Optional boom tip and winch cameras boost operator confidence, especially during blind picks.

The XCT35_U is a versatile solution for a wide range of applications, including crane rental services, arborist work, and residential or commercial construction.



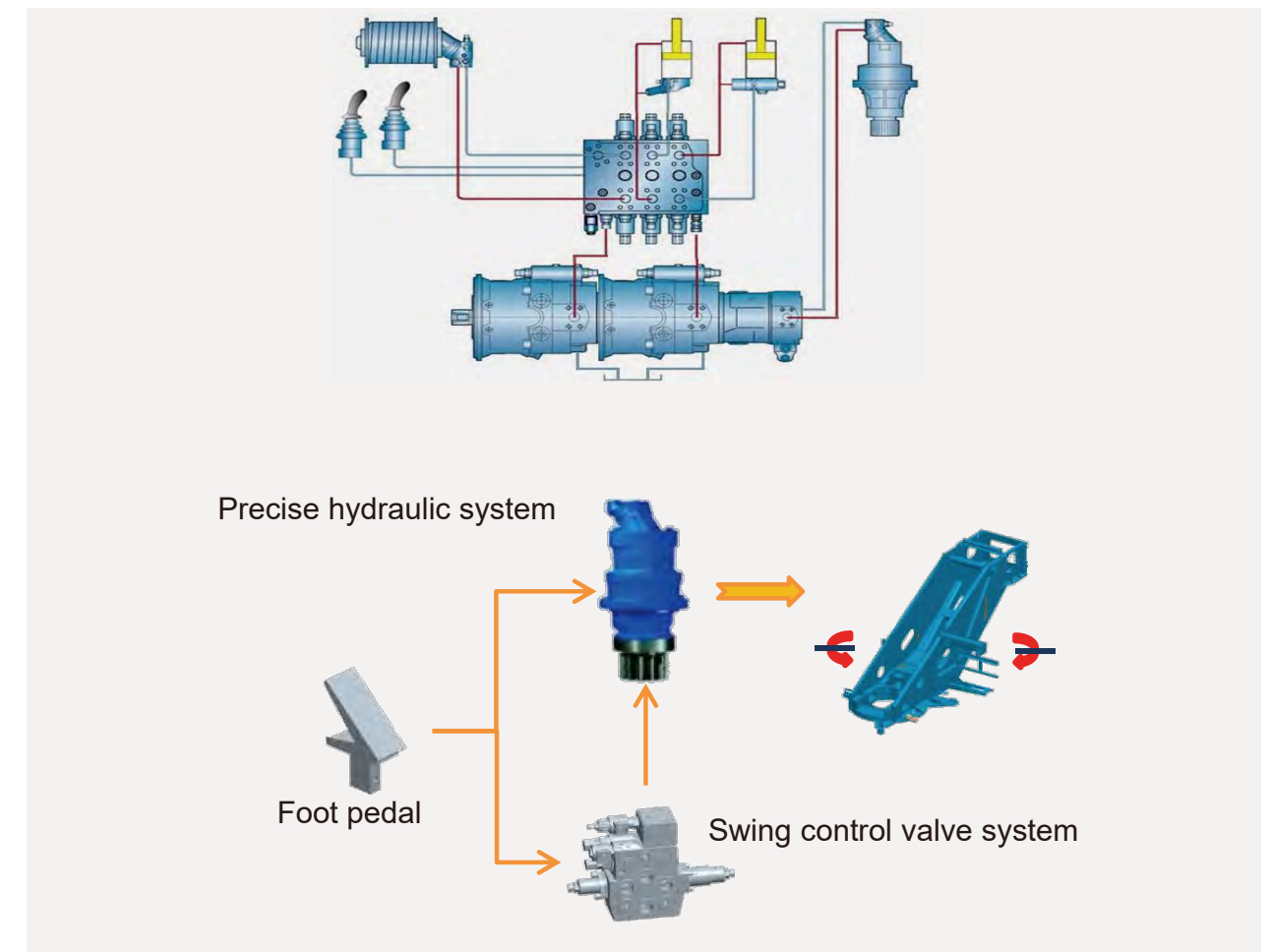


STRENGTHS AND HIGHLIGHTS



Precise lifting operation

- Efficient, load sensing hydraulic system for the boom and winch functions.
- High-power hydraulic oil cooling system, providing efficiency and reliability
- Dedicated pumps for hoisting, telescoping, and swinging enable true multifunction operation. Flow paths can be combined to achieve higher operating speeds when needed.



- Hydraulic pilot operated controls for accurate and precise control.
- Smooth, refined control along with strong and fast performance.



STRENGTHS AND HIGHLIGHTS



Automatic working condition planning technology

- LMI includes load chart look up based on load, radius and height.
- Simplifies the process of identifying valid crane configurations based on load and site conditions.



No	OM	Range of	Arm length of	Lift height	Height to	Counterweight	Log
1	00000001	10.0	23.1	7.6	21.2	0	Full extension
2	00000001	10.0	28.6	6.5	27.3	0	Full extension
3	00000001	10.0	34.1	5.6	33.2	0	Full extension
4	00000001	10.0	39.5	5.1	38.9	0	Full extension
5	00000001	11.0	23.1	6.7	20.6	0	Full extension
6	00000001	11.0	28.6	6.0	26.9	0	Full extension
7	00000001	11.0	34.1	5.2	32.8	0	Full extension
8	00000001	11.0	39.5	4.7	38.6	0	Full extension
9	00000001	12.0	23.1	5.7	20.0	0	Full extension
10	00000001	12.0	28.6	5.5	26.4	0	Full extension

Camera Package

- Equipped with optional boom tip and winch cameras to enable operators to observe the environment when working in the blind.



Wireless outrigger remote control

- Wireless outrigger remote control.



Wireless rigging remote control

- Wireless rigging remote control for winch and boom luffing simplifies setup and positioning.

Lifting performance



- Sequential telescopic formed boom
- 36.8-120ft full power 4-section boom
- Fixed 29.8ft jib
- 0°, 15° and 30° jib offset angles



STRENGTHS AND HIGHLIGHTS



New appearance and user-friendly design

- A bold new design that reflects power and performance, making it a standout addition to any fleet. Attractive cab with the comfortable combination of room and strength. Integrated ergonomic and user-friendly details that provide an enjoyable operating environment.



Interactive display

- 7 inch color screen
- Ergonomically designed work space
- Informative and interactive display that brings a user-friendly interaction



Control Panel

- Separated control panels makes operating efficient, safe, and user-friendly



Operator's cab

- The new ergonomic operator cab
- 0°-20° tiltable, wider operation view



↓ PART 02

Technical specifications



Intermediate frame

Frame Designed and manufactured by XCMG. Made of high strength steel, and anti-slip walking surfaces.

Outrigger H-type, out and down outriggers with front stabilizer. Outrigger control via standard wireless remote control and backup manual valve. Outrigger pads stored under outriggers. Level indicator provided on front and rear of crane body as well as in the LMI.
Fully-extended: 18.2ft×20ft
Half-extended: 18.2ft×14.8ft
Fully-retracted: 18.2ft×7.5ft

Hydraulic Reservoir Hydraulic oil tank capacity: 110 gallons.



Superstructure

Hydraulic system Variable displacement pumps are used for winching, luffing, and telescoping; a gear pump is used for slewing and outrigger functions. A separate gear pump is used for HVAC. A load-sensing proportional multi-way directional control valve is controlled by pilot hydraulic oil. Hydraulic oil cooler ensures consistent performance in demanding conditions.

Operating mode Hydraulic pilot joysticks. Standard LMI display includes crane set up, lift parameters, load charts, lift planning, virtual wall, and fault diagnosis.

Main winch system Hydraulic control is used for speed regulation. The system is driven by a hydraulic motor through a planetary gear reducer. Including load hold balance valve and a grooved drum, and includes rotation-resistant wire rope.
Max Single Line Pull: 8000 lb.

Operator's cab Fully-enclosed steel structure with large windows and tilt function. Safety glass is used for all windows and sun shades are fitted. Wipers are fitted for the windshield and roof window. Standard controls and indicators are ergonomically arranged in the cab. The cab features an ergonomic seat with adjustable backrest and armrests with integrated joystick controls. A sliding door and an electric control pull-out step to facilitate easy and safe access to the cab.



Superstructure

Slewing system Pilot hydraulic controls a directional valve with built in brake and free swing functions. The system is driven by a piston hydraulic motor through a planetary gear reducer, with a normally closed brake.

Safety devices Hydraulic balance valve on outrigger jacks, boom hoist and extension cylinders and winch motors. Hydraulic relief valves on all functions, LMI, 3rd wrap limiter, and anti-two block at boom head.

LMI The operator aid is installed in operator's cab. When the load moment approaches overload value, it will send out visual and audible alarms, and automatically stop dangerous movements before overloading. Overload memory function (black box) and fault self-diagnosis functions are built into the system.

Counterweight 1000 lb fixed counterweight. Optional 3000 lb removable counterweight.

Ball 5.5 USt Ball.



Boom system

Boom 4-section, U-shape formed boom. Synchronized single cylinder with cables rope extension system.
 Boom length: 36.4ft-120ft
 Boom angle: -5° -81°

Optional equipment

Operating mode Winch and boom luffing wireless remote controller for easy setup.

Swing lock 360° swing lock.

Swing mode Free swing and proportional brake.

Boom tip camera Camera on main boom nose, with screen in operator's cab.

Internal boom length sensor Boom length reels mounted internal to the boom at the base and second sections.

Fixed jib The jib includes a connecting bracket, rotating bracket, and a single lattice section. Three offset angles are available: 0°, 15°, and 30°.

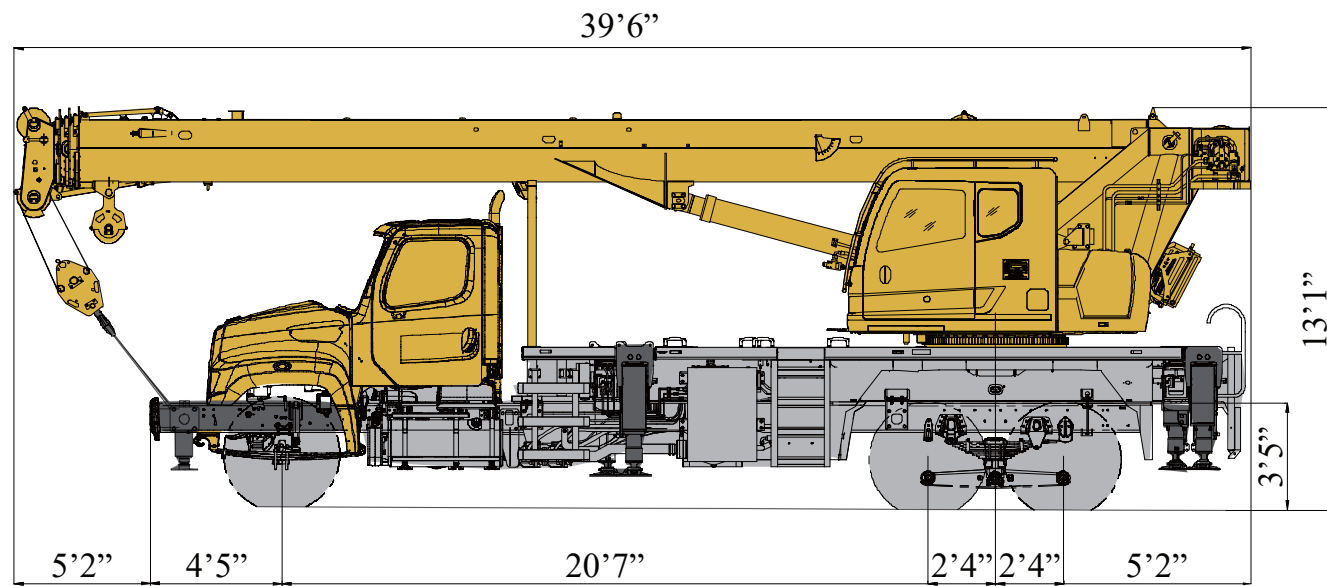
Hook block Hook block 40 USt, 27.5 USt , 15 Ust.

Front Stabilizer Installed on front of the vehicle for ensuring the stability while allowing for a 360° load chart.

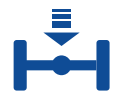
Product parts list is as mentioned above. Please refer to the product quotation for specific parts.

Symbol explanation:

- —it means the standard configuration;
- —it means the optional configuration.



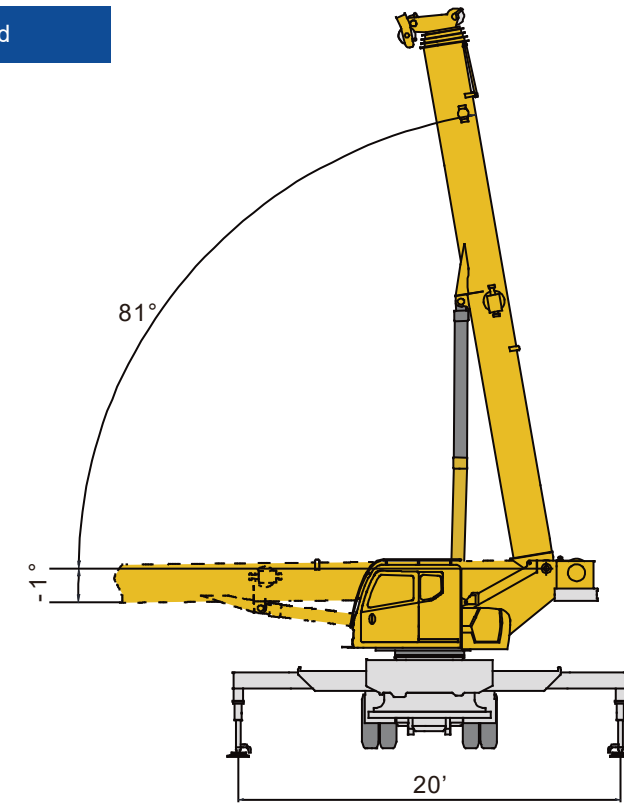
Truck Axle Ratings And Estimated Bare Chassis Weights



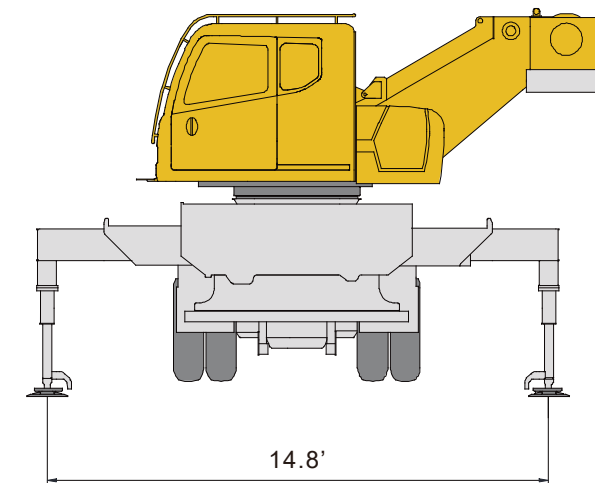
Chassis data	Front Axle Weight Rating	Second Axle Weight Rating	Third Axle Weight Rating	Total Weight Rating
● Weight/lb	19,350	18,700	19,300	57,350

Data published here is for reference only. Operation is subject to specific load chart and working conditions.

Outrigger full extended



Half-extended

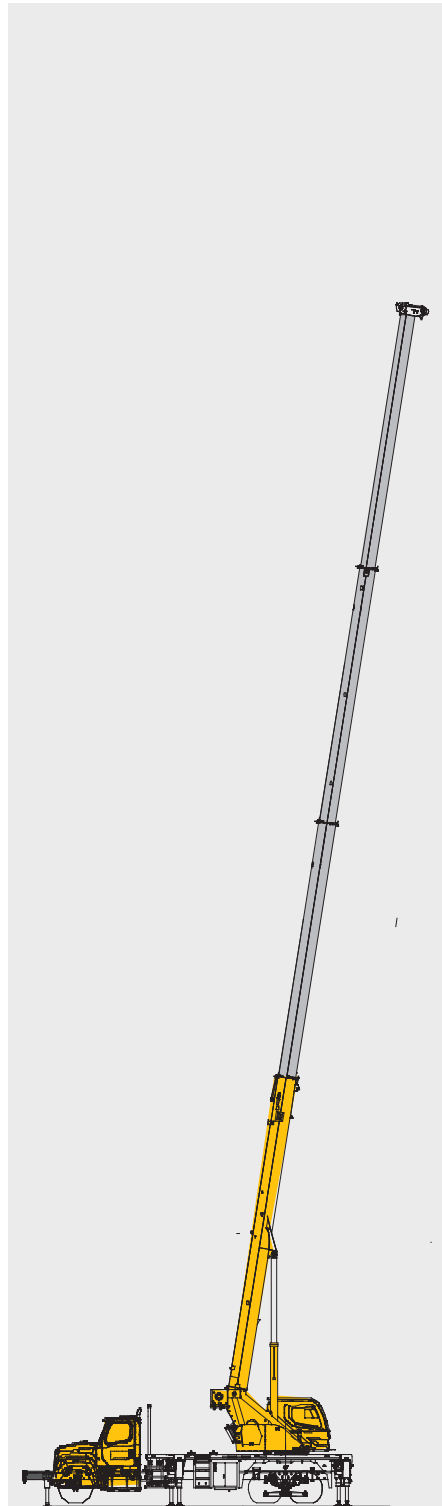




↓ PART 04

Lifting capacities and parameters

Category	Item		Unit	Parameter	
Main performance	Max. total rated lifting capacity		USt	35	
	Min. rated working radius		ft	6	
	Tail swing at turntable tail		ft	8.3	
	Max. load moment	Base boom	lb-ft	513,000	
		Fully-extended boom	lb-ft	288,000	
	Outrigger span	Longitudinal	ft	18.2	
		Lateral	ft	20	
	Hoist height	Base boom	ft	37	
		Fully-extended boom	ft	120	
		Fully-extended boom + Jib	ft	143	
	Boom length	Base boom	ft	36.4	
		Fully-extended boom	ft	120	
Fully-extended boom + Jib		ft	149.8		
Jib offset angle		°	0,15,30		
Working speed	Boom raising time		s	≤35	
	Boom fully extended time		s	≤50	
	Max. slewing speed		rpm	0-1.5	
	Outrigger extending and retracting time	Outrigger beam	Retracting	s	≤35
			Extending	s	≤35
		Outrigger jack	Retracting	s	≤40
			Extending	s	≤40
Hoisting speed (single line, 4th layer, no load)	Main winch	fpm	≥426		



Telescopic boom

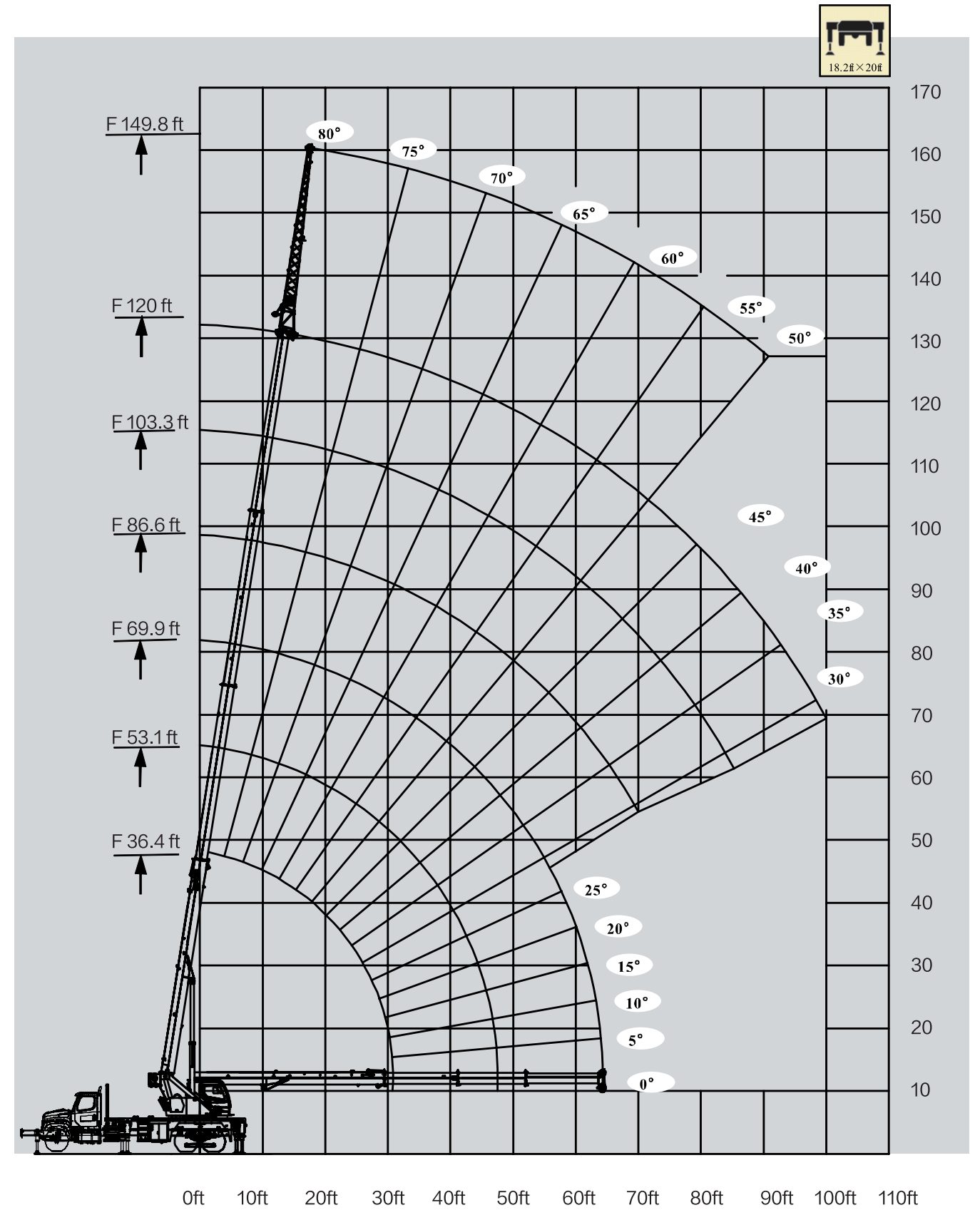
T: 36.4ft-120ft



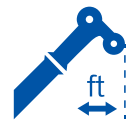
Telescopic boom+Jib

T: 120ft

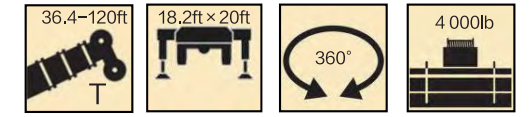
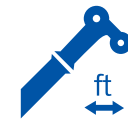
J: 29.8ft



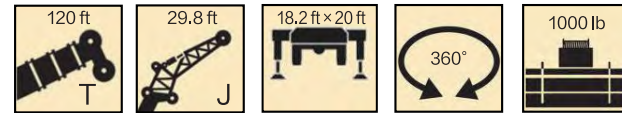
LIFTING CAPACITIES



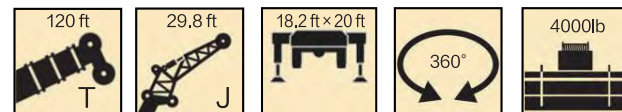
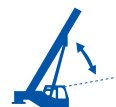
	36.4ft	53.1ft	69.9ft	86.6ft	103.3ft	120.0ft
6	70000					
8	55160					
10	41260	28910				
12	38610	28910				
15	30890	28910	26700	18260		
20	24710	25380	22730	16770	12760	
25	19200	19860	19860	14780	11690	8030
30	14120	14780	15230	12070	9490	8030
35		11470	11920	10890	8830	7720
40		8830	9270	9240	7500	6400
45		7060	7280	7500	6620	6400
50			5960	6180	5960	5080
55			4850	5080	5080	4630
60				4190	4190	3740
65				3310	3530	3400
70				2870	2870	2700
75					2430	2430
80					1990	1990
85					1540	1540
90						1320
95						880
100						660
Deductions for stowed fixed jib	540	370	280	230	190	160



	36.4ft	53.1ft	69.9ft	86.6ft	103.3ft	120.0ft
6	70000					
8	55160					
10	41260	28910				
12	38610	28910				
15	30890	28910	26700	18260		
20	24710	25380	22730	16770	12760	
25	20520	20960	19860	14780	11690	8030
30	15230	15890	16110	12070	9490	8030
35		12360	12580	10890	8830	7720
40		9930	10150	9240	7500	6400
45		7940	8380	7960	6620	6400
50			6840	7060	5960	5080
55			5520	5740	5080	4630
60				4850	4740	3740
65				3970	4050	3400
70				3310	3360	2700
75					2870	2650
80					2430	2340
85					1990	1970
90						1540
95						1320
100						1100
Deductions for stowed fixed jib	540	370	280	230	190	160



	0°	15°	30°
80	3310	2870	2540
78	3090	2870	2430
76	3090	2870	2320
74	2980	2760	2100
72	2980	2760	1990
70	2980	2760	1880
68	2870	2650	1880
66	2870	2540	1880
64	2760	2320	1770
62	2430	1990	1650
60	2210	1770	1650
58	1770	1540	1320
56	1540	1320	1320
54	1320	1100	1100
52	1100	880	880
50	880		



	0°	15°	30°
80	3310	2870	2540
78	3090	2870	2430
76	3090	2870	2320
74	2980	2760	2100
72	2980	2760	1990
70	2980	2760	1880
68	2870	2650	1880
66	2870	2540	1880
64	2760	2320	1770
62	2540	1990	1650
60	2320	1770	1650
58	1990	1540	1320
56	1650	1430	1320
54	1430	1320	1210
52	1320	1210	990
50	1210		

↓ PART 05

ASSEMBLY





ASSEMBLED IN PENNSYLVANIA

XCMG XCT boom trucks are proudly assembled at High Caliber Cranes, located in Selinsgrove, Pennsylvania. The state-of-the-art facility at High Caliber Cranes offers comprehensive repairs, parts distribution, maintenance, sales, and rentals.

As the assembly partner for XCMG boom trucks, High Caliber Cranes provides the expertise, infrastructure, and parts support needed to keep your fleet running at peak performance.



All Rights Reserved

Materials and specifications are subject to change without notice,
Featured machines in photos may include additional equipment.
See your XCMG dealer for available options.



**1888 SOUTH MARKET ST
SELINGROVE, PA**

AUTHORIZED DEALER

570-884-8050



XCMG FOR YOUR SUCCESS

High Caliber Cranes

1888 S Market St. Selingsrove, PA 17870

Email: sales@highcalibercranes.com

Phone: (570) 884-8050

Web: www.highcalibercranes.com