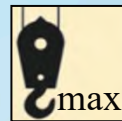




# XCT40\_U

BOOM TRUCK



40USt



142ft



197ft



# CONTENTS

<b>01</b>	<b>PRODUCT OVERVIEW</b>	
	Product overview	01
	Lifting performance	03
<b>02</b>	<b>TECHNICAL SPECIFICATIONS</b>	
	Technical specifications	10
<b>03</b>	<b>PARAMETERS</b>	
	Basic performance parameters	14
	Dimensions	15
<b>04</b>	<b>LIFTING CAPACITIES</b>	
	Lifting capacities	18
<b>05</b>	<b>CONSTRUCTION CASES</b>	
	Use cases	23

## ↓ PART 01

### Product overview





# PRODUCT OVERVIEW

The XCMG XCT40\_U boom truck delivers high lifting capacity and versatility for the North American market.

It is designed for use on construction sites, transportation jobs, ports, bridges, tree work, and other complex work environments



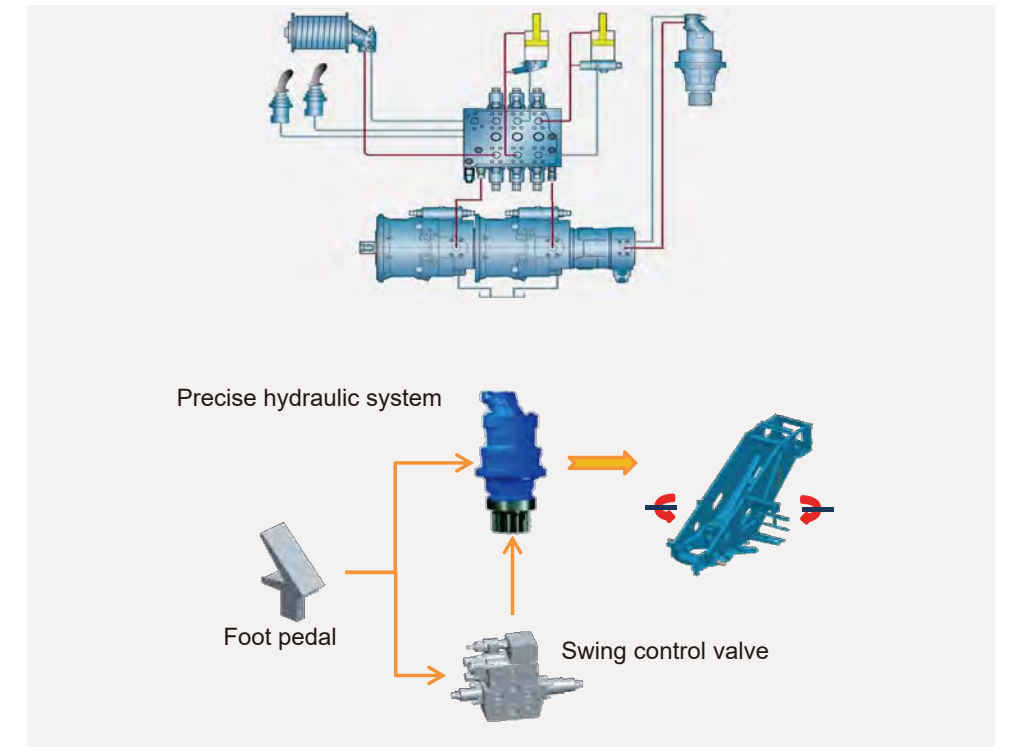


## STRENGTHS AND HIGHLIGHTS



### Precise lifting operation

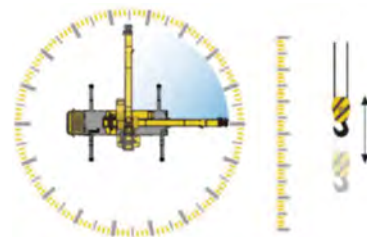
- Energy-saving, load sensing hydraulic system controls boom and winch functions.
- High-power hydraulic oil cooler, providing efficiency and reliability
- Separate pumps for hoisting, telescoping, and swinging for easy multifunction operation. Flows can be combined for higher speeds when needed.
- Free and braked swing modes for precise swing control.



### Lifting performance



- 2 mode boom telescoping system
- 35.8-142ft full power 5-section boom
- Bi-fold 30.5ft-53.5ft jib
- 0°, 15° and 30° jib offset angles



- Dual load sense variable displacement pumps
- Minimum stable winch speed 8.2fpm, and minimum stable slewing speed 0.1°/s



- Hydraulic, pilot operated controls for accurate and precise control.
- Optimized controls, providing strong and fast performance.

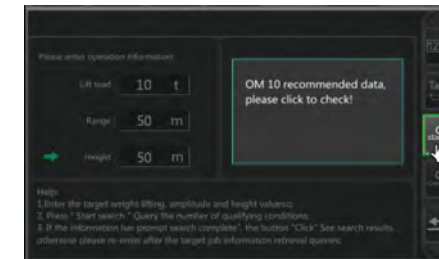


## STRENGTHS AND HIGHLIGHTS



### Automatic working condition planning technology

- LMI includes load chart look up based on load, radius and height.
- Simplified procedure for looking up load chart configurations



No	CM	Range m	Arm length m	Lift height m	Height m	Counterweight t	LG
1	00000001	10.0	23.1	7.6	21.2	0	Full extension
2	00000001	10.0	28.6	6.5	27.3	0	Full extension
3	00000001	10.0	34.1	5.6	33.2	0	Full extension
4	00000001	10.0	39.5	5.1	38.9	0	Full extension
5	00000001	11.0	23.1	6.7	20.6	0	Full extension
6	00000001	11.0	28.6	6.0	26.9	0	Full extension
7	00000001	11.0	34.1	5.2	32.8	0	Full extension
8	00000001	11.0	39.5	4.7	38.6	0	Full extension
9	00000001	12.0	23.1	5.7	20.0	0	Full extension
10	00000001	12.0	28.6	5.5	26.4	0	Full extension



Outrigger wireless remote control

- Outrigger wireless remote control.



Winch wireless remote control

- Wireless remote control for winch and boom luffing functions.



Camera Package

- Equipped with optional boom tip and hoist cameras to enable operators to observe the environment when the view is blocked.

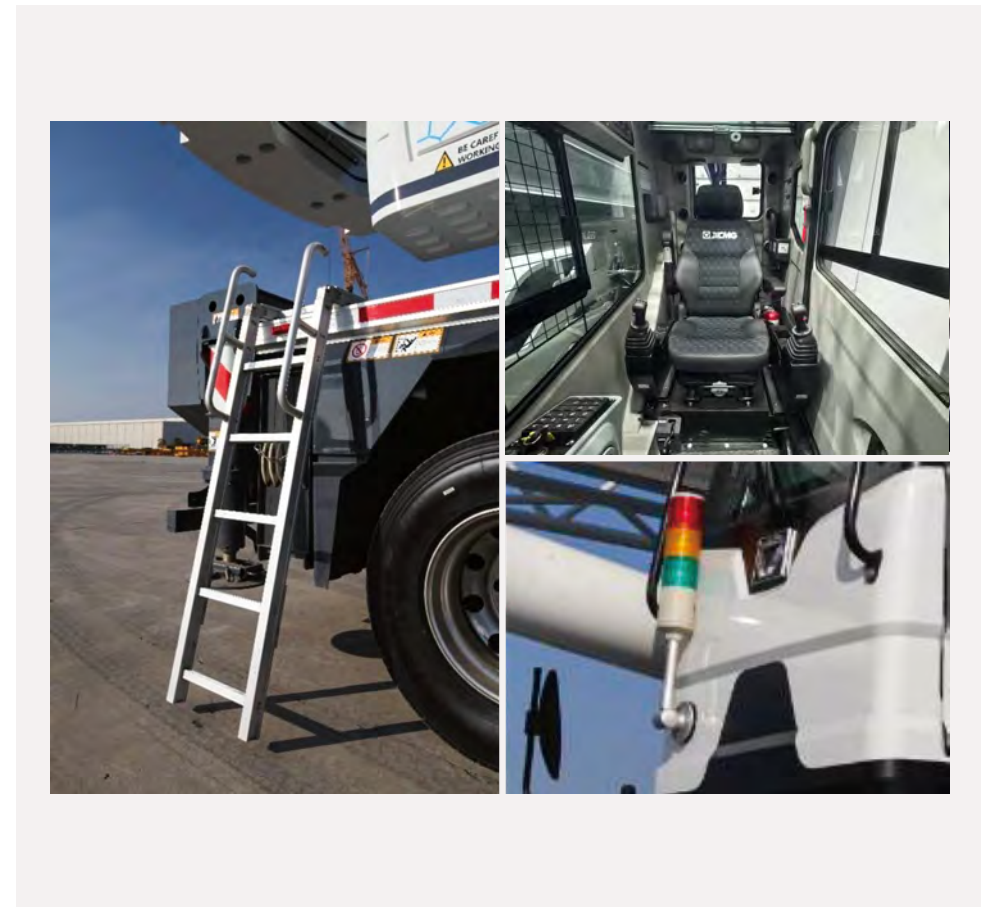


## STRENGTHS AND HIGHLIGHTS



### New appearance and ergonomic design

- This new-generation cab is designed for comfort and dependability, integrating ergonomic and user-friendly features that enhance efficiency and safety.



### Interactive display

- 7 inch color screen
- Ergonomically designed work space
- Informative and interactive display that brings a user-friendly interaction



### Control Panel

- Separated control panels makes operating efficient, safe, and user-friendly



### Operator's cab

- Redesigned operator cab
- 0°-20° tiltable, wider operation view



# ↓ PART 02

## Technical specifications



### Intermediate frame

**Frame** Designed and manufactured by XCMG. Made of high strength steel, and anti-slip working areas

**Outrigger** H-type, out and down outriggers equipped with a front jack. Outrigger control via wireless remote control. The remote has a manual backup valve. Outrigger pads stored under outriggers. Level indicator provided on each side and at rear of crane as well as in the LMI.  
Fully-extended: 20.3ft×23.6ft  
half-extended: 20.3ft×16ft

**Hydraulic Reservoir** Effective volume of oil tank: 149 gallon.



### Superstructure

**Hydraulic system** Variable displacement pumps are used for winching, luffing, and telescoping; a gear pump is used for slewing and outriggers. A separate gear pump is used for HVAC. A load-sensing proportional multi-way directional control valve is controlled by pilot hydraulic oil. Includes a standard hydraulic oil cooler to control oil temperature in the most demanding applications.

**Operating mode** Hydraulic pilot joysticks. Standard RLI display includes crane set up, lift parameters, load charts, lift planning, virtual wall, and fault diagnosis.

**Main winch system** Hydraulic control is used for speed regulation. The system is driven by a hydraulic motor through a planetary gear reducer, with a normally closed brake, including a load hold balance valve and a grooved drum with standard rotation-resistant lift rope.

**Operator's cab** Enclosed steel cab, with large windows and cab tilt. Safety glass is used for all windows. Window blinds are fitted to each panel. Wipers are mounted to both the windshield and sunroof. Controls and indicators are ergonomically placed in the cab. The cab features a new wider, ergonomic design with an adjustable backrest, armrests, and joysticks, a sliding door and an electronically controlled step to facilitate easy and safe access to the cab.



Superstructure

**Slewing system** Pilot hydraulic controls a directional valve with built in brake and free swing functions. The system is driven by a piston hydraulic motor through a planetary gear reducer, with a normally closed brake.

●

**Safety devices** Hydraulic balance valve on outrigger jacks, boom hoist and extension cylinders and winch motors. Hydraulic relief valves on all functions, LMI, 3rd wrap limiter, and anti-two block at boom head.

●

**LMI** The operator aid is installed in operator's cab. When the load moment approaches overload value, it will send out visual and audible alarms, and automatically stops potentially dangerous movements before an overload occurs. Overload memory function (black box) and fault self-diagnosis functions are built into the system.

●

**Counterweight** Total weight is 4409 lb, fixed counterweight.

●

**Ball** 5.5USt Ball.

●



Boom system

**Boom** 5-section, U-shape cross section welded structure. A dual-cylinder and ropes telescoping system is used to control the boom sections. The two double-acting cylinders are controlled separately to give 2 mode operation and are fitted with load holding valves. Boom length: 35.8ft-142ft. Boom angle: -1°-80°

●

Optional equipment

**Auxiliary winch system** Hydraulic control is used for speed regulation. The system is driven by a hydraulic motor through a planetary gear reducer, with a normally closed brake, a balanced valve and a grooved drum equipped.

○

**Operating mode** Winch and boom luffing wireless remote controller

○

**Swing lock** 360° gear type swing lock

○

**Swing mode** Free swing and proportional brake

○

**Boom tip camera** Camera on main boom head, with screen in operator's cab

○

**Internal boom length sensor** Boom length reels mounted internal to the boom at the base and second sections.

○

**Fixed jib** The jib consists of a connecting bracket, a rotating bracket and two lattice sections. Three offset angles of 0° , 15° and 30° are available. Jib length: 30.5ft-53.5ft

○

**Hook block** Hook block 40USt, 27.5USt , 15USt

○

**Fifth jack** Installed in front of the vehicle for ensuring the stability and safety during over front operation

○

Product parts list is as mentioned above. Please refer to the product quotation for specific parts.

Symbol explanation:

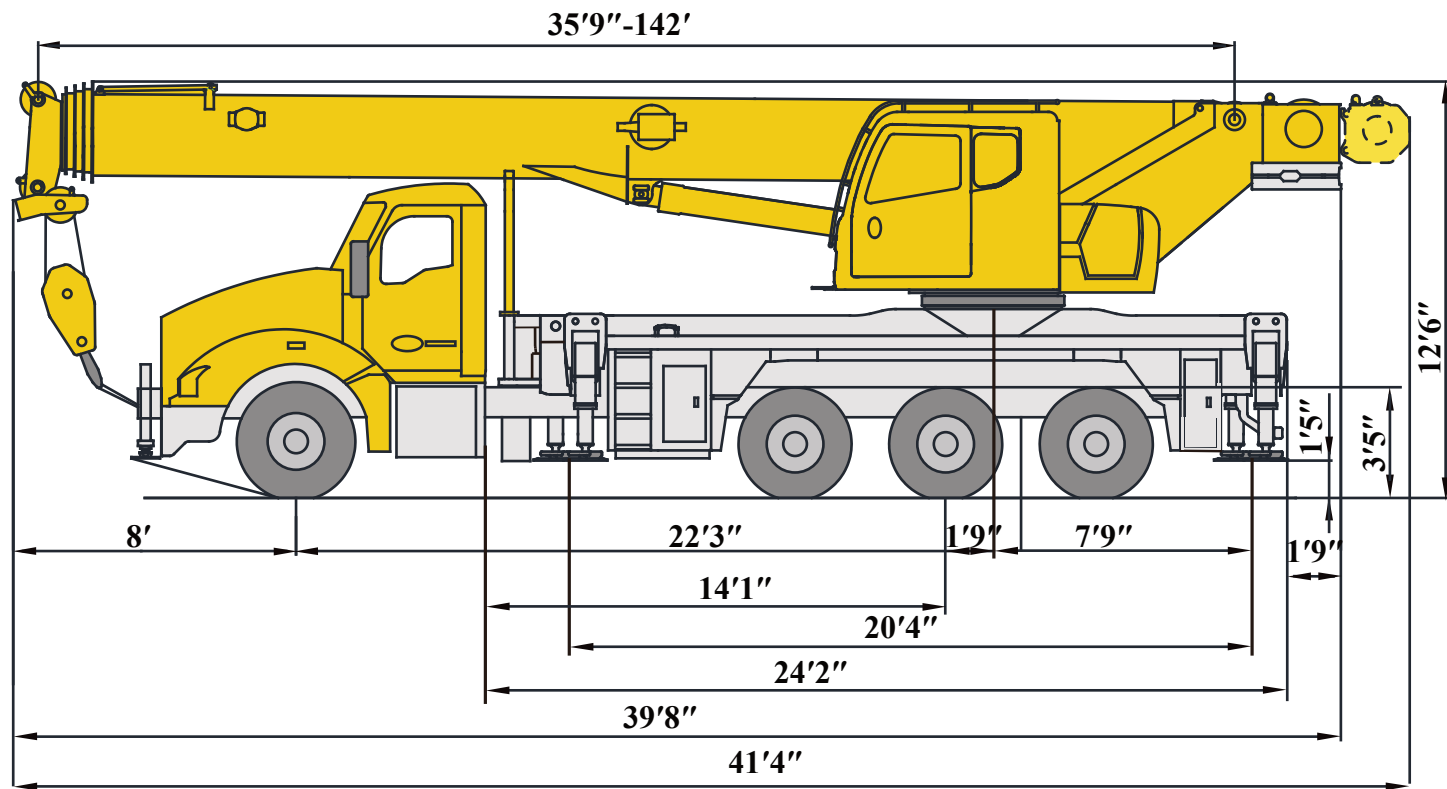
- —it means the standard configuration;
- —it means the optional configuration.



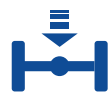
# ↓ PART 03

## Parameters

Category	Item		Unit	Parameter	
Main performance	Max. total rated lifting capacity		USt	40	
	Min. rated working radius		ft	5	
	Tail swing at turntable tail		ft	10.43	
	Max. load moment	Base boom	lb-ft	708000	
		Fully-extended boom	lb-ft	393000	
		Fully-extended boom + Jib	lb-ft	112000	
	Outrigger span	Longitudinal	ft	20.3	
		Lateral	ft	23.6	
	Hoist height	Base boom	ft	37	
		Fully-extended boom	ft	141	
		Fully-extended boom + Jib	ft	197	
Boom length	Base boom	ft	35.8		
	Fully-extended boom	ft	142		
	Fully-extended boom + Jib	ft	195.5		
Jib offset angle		°	0,15,30		
Working speed	Boom raising time		s	≤35	
	Boom fully extended time		s	≤70	
	Max. slewing speed		rpm	0-1.2	
	Outrigger extending and retracting time	Outrigger beam	Retracting	s	≤35
			Extending	s	≤35
		Outrigger jack	Retracting	s	≤40
			Extending	s	≤40
Hoisting speed (single line, 4th layer, no load)		Main winch	fpm	≥443	



Truck Axle Ratings And Estimated Bare Chassis Weights

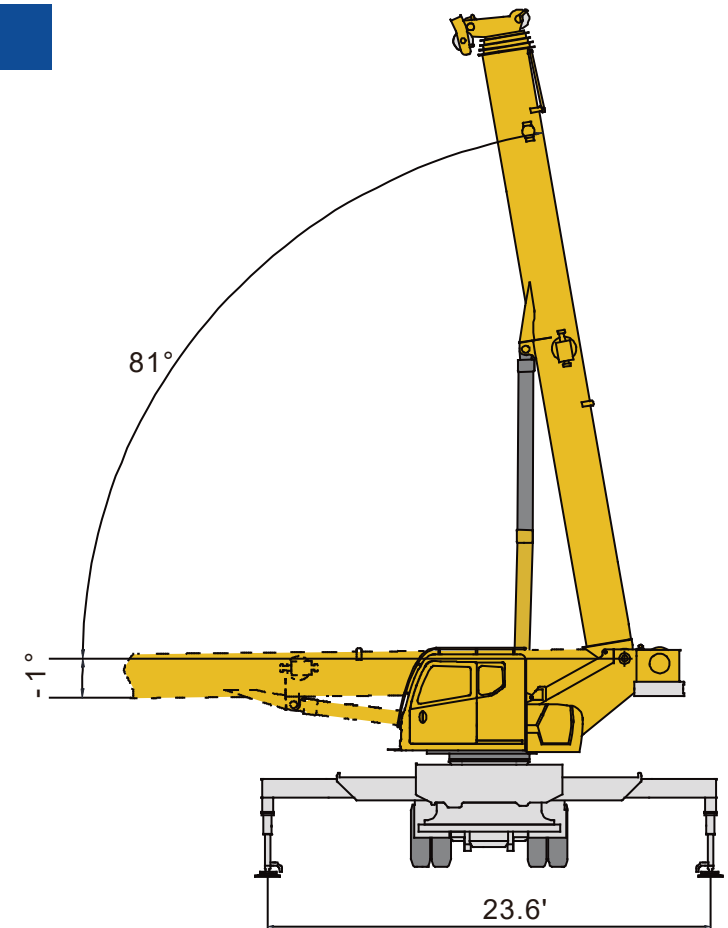


Chassis data	Front Axle Gross Weight Rating	Pusher Axle Weight Rating	Third Axle Weight Rating	Fourth Axle Weight Rating	Total Weight Rating
● Weight/lb	19,150	8,600	20,700	21,150	69,600

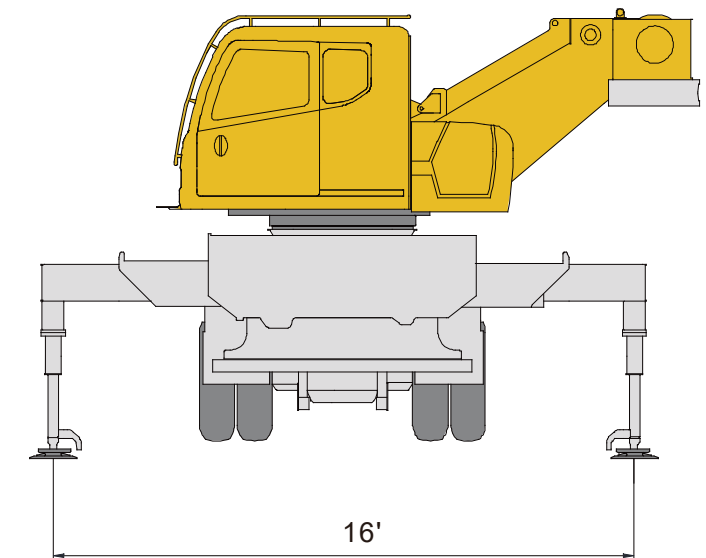
Data published here is for reference only. Operation is subject to specific load chart and working conditions.

With different chassis, the parameters may vary.

Outrigger full extended



Half-extended

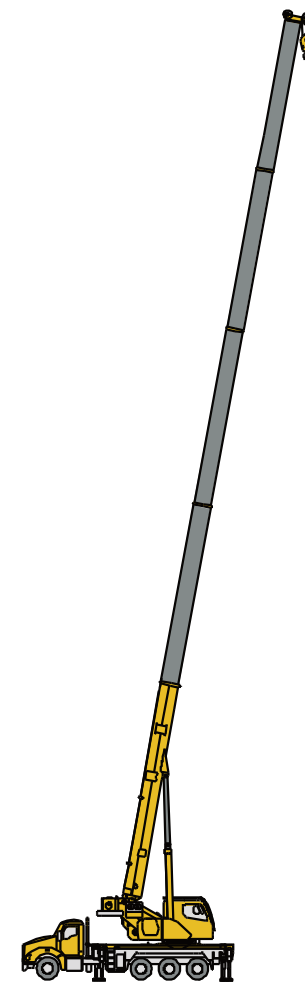




# ↓ PART 04

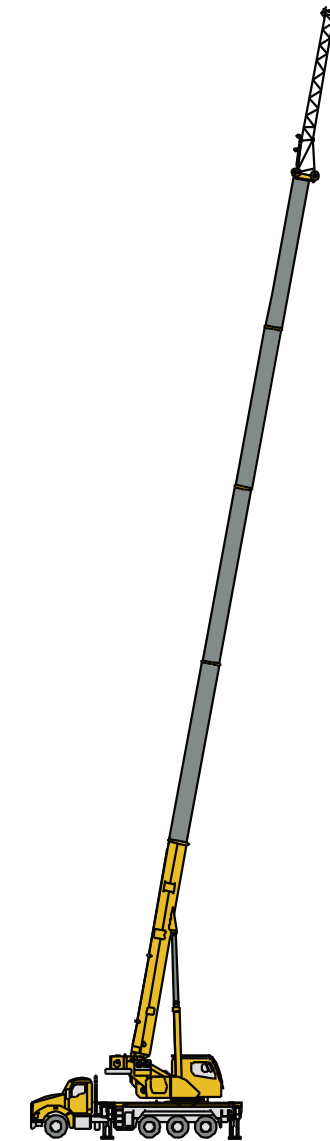
## Lifting capacities

The crane is equipped with 35.8 ft -142 ft five-section boom, and can be equipped with two lattice jib sections. Jib length: 30.5ft-53.5ft .



Telescopic boom

T: 35.8ft-142ft



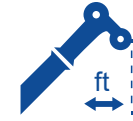
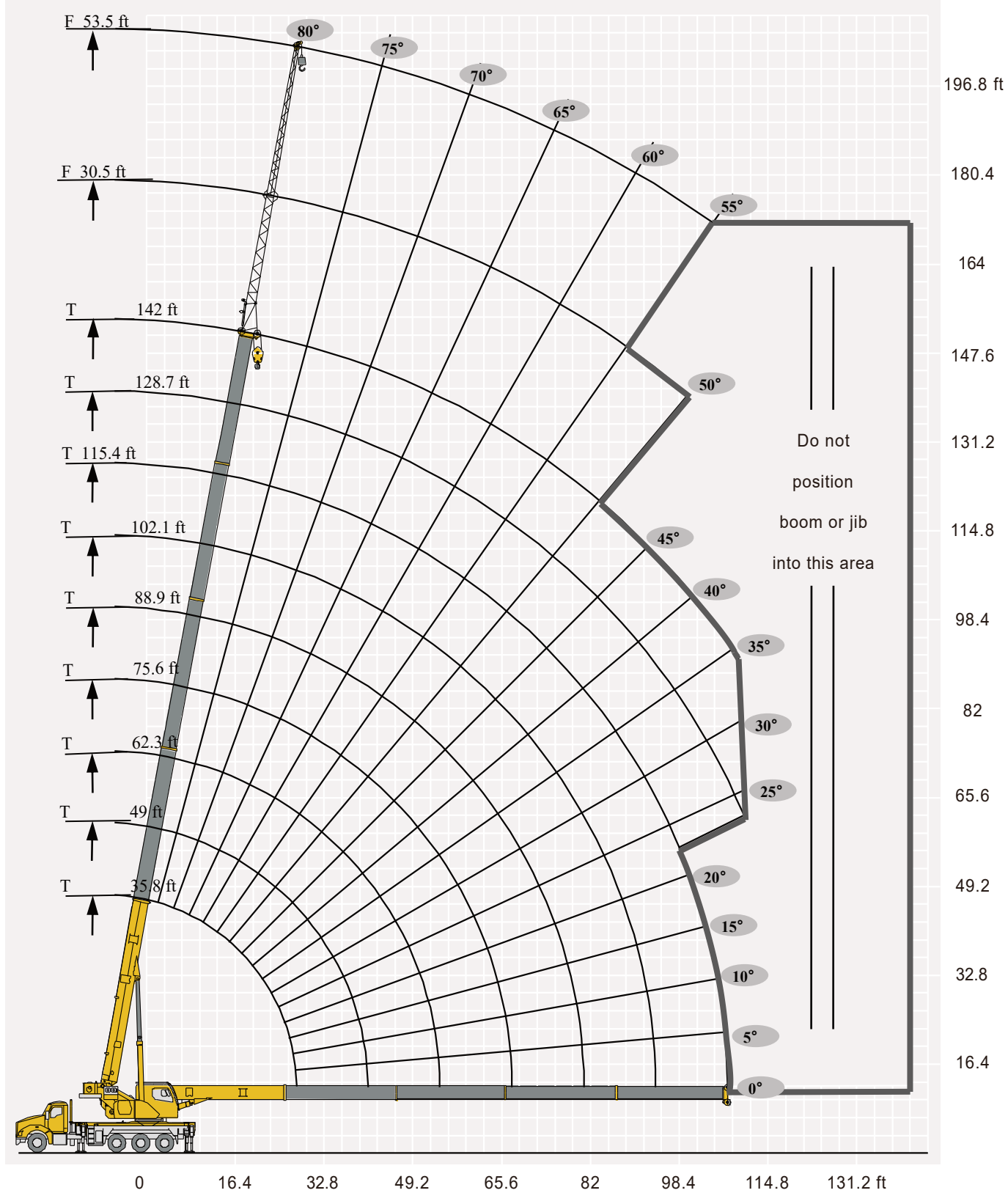
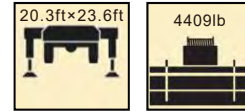
Telescopic boom+Jib

T: 142ft  
J: 30.5ft

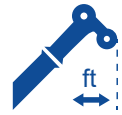


Telescopic boom+Jib

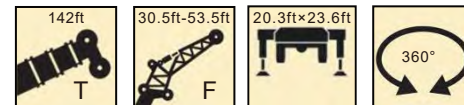
T: 142ft  
J: 30.5ft-53.5ft



	35.8 ft	49 ft	49 ft	62.3 ft	62.3 ft	62.3 ft	75.6 ft	75.6 ft	75.6 ft	88.9 ft	88.9 ft
5	80020										
7	70540										
8	61720										
10	55110	30860	44090	30860	28210	39680					
11	55110	30860	44090	30860	28210	39680					
13	49600	30860	43870	30860	28210	39680	28210	18950	30860		
15	46290	30860	43650	30860	28210	39680	28210	18950	30860	18950	13880
16	43210	30860	40560	30860	28210	38580	28210	18950	30860	18950	13880
18	39020	30860	37910	30860	28210	35710	28210	18950	30860	18950	13880
20	34830	30860	35050	30860	28210	33500	28210	18950	30860	18950	13880
21	31740	29760	30860	30860	28210	30860	28210	18950	30420	18950	13880
23	29100	29100	28650	29760	28210	27330	28210	18950	28880	18950	13880
26	24250	26450	24250	25350	26450	23140	26010	18950	24690	18950	13880
30		22480	20500	22040	22700	19840	22040	18950	19840	18950	13880
33		20500	18070	19400	20500	17410	20280	18950	18730	18950	13880
36		17630	15210	16530	17410	14320	16970	18510	15430	17850	13880
39		14990	12780	13880	14990	12120	14770	16090	13220	15430	13880
43				12120	12780	10360	12780	14100	11240	13220	13880
46				10360	11240	8590	11240	12340	9700	11680	12780
49				9030	9920	7270	9700	11020	8370	10360	11460
52				7930	8810	6170	8590	9920	7050	9030	10140
59							6610	7930	5290	7050	8150
66										5730	6830
72										4620	5510
2nd	0	0%	50%	50%	0	100%	50%	0	100%	50%	0
3rd	0	16.70%	0%	16.70%	33.30%	0	33.30%	50%	16.70%	50%	66.70%
4th	0	16.70%	0%	16.70%	33.30%	0	33.30%	50%	16.70%	50%	66.70%
5th	0	16.70%	0%	16.70%	33.30%	0	33.30%	50%	16.70%	50%	66.70%



	88.9 ft	102.1 ft	102.1 ft	102.1 ft	115.4 ft	115.4 ft	115.4 ft	128.8 ft	128.7 ft	142 ft
15	28210									
16	27550									
18	26890									
20	25350									
21	24250	13880	10360	18950						
23	23360	13880	10360	18070	10360	8370	13880	8370	10360	
26	21820	13880	10360	16750	10360	8370	13880	8370	10360	8370
30	20280	13880	10360	15650	10360	8370	13220	8370	10360	8370
33	18070	13880	10360	14770	10360	8370	13000	8370	10360	8370
36	16530	13880	10360	14100	10360	8370	12780	8370	10360	8370
39	14320	13880	10360	13440	10360	8370	12560	8370	10360	8370
43	12120	13220	10360	12560	10360	8370	11680	8370	10360	8370
46	10580	12120	10360	11020	10360	8370	10800	8370	10140	8150
49	9250	10800	10360	9700	10360	8370	9700	8370	9250	7930
52	8150	9470	10140	8370	9700	8370	8810	7930	8590	7490
59	5950	7490	8370	6610	7710	7710	6830	7710	7270	6390
66	4620	5950	7050	5070	6390	7050	5510	6610	5730	5950
72	3300	4850	5510	3960	5070	5950	4180	5290	4620	4850
79		3960	4850	2860	4180	5070	3300	4400	3520	3740
85		3080	3740	1980	3300	4180	2420	3520	2640	2860
92					2640	3520	1540	2860	1980	2200
98					1980	2640	1100	1980	1320	1540
105								1540	880	1100
112								1100		660
2nd	100%	50%	0	100%	50%	0	100%	50%	100%	100%
3rd	33.30%	66.70%	83.30%	50%	83.30%	100%	66.70%	100%	83.30%	100%
4th	33.30%	66.70%	83.30%	50%	83.30%	100%	66.70%	100%	83.30%	100%
5th	33.30%	66.70%	83.30%	50%	83.30%	100%	66.70%	100%	83.30%	100%



Jib	30.5ft			53.5ft	
	0°	15°	30°	0°	15°
79	3740	3300	2640	2200	1100
78	3520	3260	2640	1980	1050
75	3190	3190	2640	1870	990
72	3080	3080	2420	1650	880
70	2860	2860	2420	1540	880
65	2750	2640	2420	1320	770
60	2640	2420	2200	1100	660
55	1760	1540	1540	770	
50	880				

# ↓ PART 05

## Construction cases





All Rights Reserved

Materials and specifications are subject to change without notice,  
Featured machines in photos may include additional equipment.  
See your XCMG dealer for available options.



**1888 SOUTH MARKET ST  
SELINGROVE, PA**

**AUTHORIZED DEALER**

**570-884-8050**



XCMG FOR YOUR SUCCESS

## High Caliber Cranes

1888 S Market St. Selingsrove, PA 17870

Email: [sales@highcalibercranes.com](mailto:sales@highcalibercranes.com)

Phone: (570) 884-8050

Web: [www.highcalibercranes.com](http://www.highcalibercranes.com)